

APC Rabbit anti-Human CD244/2B4 mAb

Catalog No.: A26837

Basic Information

Observed MW

Calculated MW

42kDa

Category

Primary antibody

Applications

FC

Cross-Reactivity

Human

CloneNo number

ARC61963

Conjugate

APC. Ex:650nm. Em:660nm.

Background

This gene encodes a cell surface receptor expressed on natural killer (NK) cells (and some T cells) that mediate non-major histocompatibility complex (MHC) restricted killing. The interaction between NK-cell and target cells via this receptor is thought to modulate NK-cell cytolytic activity. Alternatively spliced transcript variants encoding different isoforms have been found for this gene.

Recommended Dilutions

FC 5 μ l per 10^6 cells in
100 μ l volume

Immunogen Information

Gene ID

51744

Swiss Prot

Q9BZW8

Immunogen

Recombinant protein (or fragment). This information is considered to be commercially sensitive.

Synonyms

2B4; NAIL; Nmrk; NKR2B4; SLAMF4

Contact

 | 400-999-6126

 | cn.market@abclonal.com.cn

 | www.abclonal.com.cn

Product Information

Source

Rabbit

Isotype

IgG

Purification

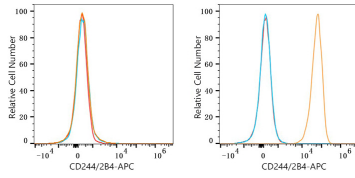
Affinity purification

Storage

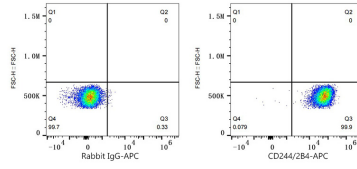
Store at 2-8°C. Avoid freeze.

Buffer: PBS with 0.09% Sodium azide, 0.2% BSA, pH7.3.

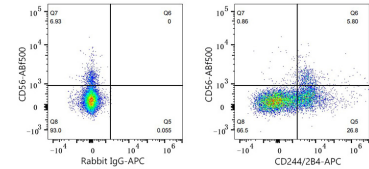
Validation Data



Flow cytometry: 1×10^6 K-562 cells (negative control, left) and HEL cells (right) were surface-stained with APC Rabbit anti-Human CD244/2B4 mAb (A26837, 5 μ l/Test, orange line) or APC Rabbit IgG isotype control (A24173, 5 μ l/Test, blue line). Non-fluorescently stained cells were used as blank control (red line).



Flow cytometry: 1×10^6 HEL cells were surface-stained with APC Rabbit IgG isotype control (A24173, 5 μ l/Test, left) or APC Rabbit anti-Human CD244/2B4 mAb (A26837, 5 μ l/Test, right).



Flow cytometry: 1×10^6 Human PBMC were surface-stained with ABflo® 450 Mouse anti-Human CD56 mAb (5 μ l/Test) and APC Rabbit IgG isotype control (A24173, 5 μ l/Test, left) or APC Rabbit anti-Human CD244/2B4 mAb (A26837, 5 μ l/Test, right). Cells in the lymphocyte gate were used for analysis.