

ABflo® 700 Rabbit anti-Human CD1c mAb

Catalog No.: A26842

Basic Information

Observed MW

Calculated MW

38kDa

Category

Primary antibody

Applications

FC

Cross-Reactivity

Human

CloneNo number

ARC65906-ABflo700

Conjugate

ABflo® 700. Ex:690nm. Em:713nm.

Recommended Dilutions

FC 5 µl per 10⁶ cells in
100 µl volume

Background

This gene encodes a member of the CD1 family of transmembrane glycoproteins, which are structurally related to the major histocompatibility complex (MHC) proteins and form heterodimers with beta-2-microglobulin. The CD1 proteins mediate the presentation of primarily lipid and glycolipid antigens of self or microbial origin to T cells. The human genome contains five CD1 family genes organized in a cluster on chromosome 1. The CD1 family members are thought to differ in their cellular localization and specificity for particular lipid ligands. The protein encoded by this gene is broadly distributed throughout the endocytic system via a tyrosine-based motif in the cytoplasmic tail. Alternatively spliced transcript variants of this gene have been observed, but their full-length nature is not known.

Immunogen Information

Gene ID

911

Swiss Prot

P29017

Immunogen

Recombinant fusion protein containing a sequence corresponding to amino acids 19-298 of human CD1c (NP_001756.2).

Synonyms

R7; CD1; CD1A; BDCA1

Contact

☎ | 400-999-6126

✉ | cn.market@abclonal.com.cn

🌐 | www.abclonal.com.cn

Product Information

Source

Rabbit

Isotype

IgG

Purification

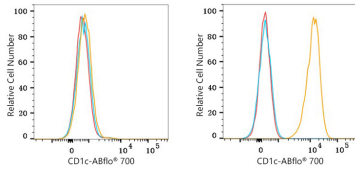
Affinity purification

Storage

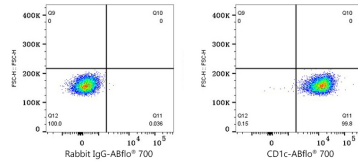
Store at 2-8°C. Avoid freeze.

Buffer: PBS with 0.09% Sodium azide, 0.2% BSA, pH7.3.

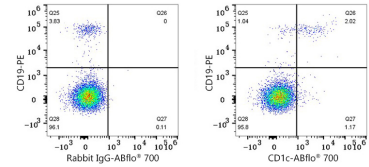
Validation Data



Flow cytometry: 1×10^6 K-562 cells (negative control, left) and MOLT-4 cells (right) were surface-stained with ABflo® 700 Rabbit anti-Human CD1c mAb (A26842, 5 μ l/Test, orange line) or ABflo® 700 Rabbit IgG isotype control (A25976, 5 μ l/Test, blue line). Non-fluorescently stained cells were used as blank control (red line).



Flow cytometry: 1×10^6 MOLT-4 cells were surface-stained with ABflo® 700 Rabbit IgG isotype control (A25976, 5 μ l/Test, left) or ABflo® 700 Rabbit anti-Human CD1c mAb (A26842, 5 μ l/Test, right).



Flow cytometry: 1×10^6 Human PBMC were surface-stained with PE Mouse anti-Human CD19 mAb (A22816, 5 μ l/Test) and ABflo® 700 Rabbit IgG isotype control (A25976, 5 μ l/Test, left) or ABflo® 700 Rabbit anti-Human CD1c mAb (A26842, 5 μ l/Test, right). Cells in the lymphocytes gate were used for analysis.