

MFG-E8 Rabbit mAb

Catalog No.: A26854 **Recombinant**

Basic Information

Observed MW

51kDa

Calculated MW

43kDa

Category

Primary antibody

Applications

WB,IF/ICC,ELISA

Cross-Reactivity

Human, Mouse, Rat

CloneNo number

ARC70281

Background

This gene encodes a preproprotein that is proteolytically processed to form multiple protein products. The major encoded protein product, lactadherin, is a membrane glycoprotein that promotes phagocytosis of apoptotic cells. This protein has also been implicated in wound healing, autoimmune disease, and cancer. Lactadherin can be further processed to form a smaller cleavage product, medin, which comprises the major protein component of aortic medial amyloid (AMA). Alternative splicing results in multiple transcript variants.

Recommended Dilutions

WB 1:100000 - 1:600000

IF/ICC 1:200 - 1:800

ELISA Recommended starting concentration is 1 µg/mL. Please optimize the concentration based on your specific assay requirements.

Immunogen Information

Gene ID

4240

Swiss Prot

Q08431

Immunogen

Recombinant fusion protein containing a sequence corresponding to amino acids 231-387 of human MFG-E8 (NP_005919.2).

Synonyms

BA46; HMFG; MFGM; SED1; hP47; EDIL1; MFG-E8; SPAG10; OAcGD3S; HsT19888

Contact

☎ | 400-999-6126

✉ | cn.market@abclonal.com.cn

🌐 | www.abclonal.com.cn

Product Information

Source

Rabbit

Isotype

IgG

Purification

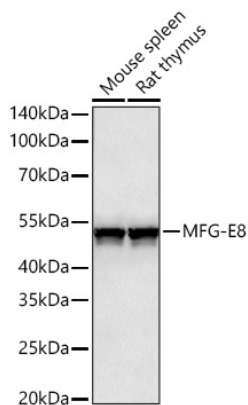
Affinity purification

Storage

Store at -20°C. Avoid freeze / thaw cycles.

Buffer: PBS with 0.09% Sodium azide,0.05% BSA,50% glycerol,pH7.3.

Validation Data



Western blot analysis of various lysates using MFG-E8 Rabbit mAb (A26854) at 1:100000 dilution incubated overnight at 4°C.

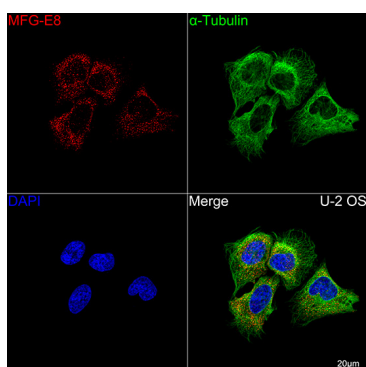
Secondary antibody: HRP-conjugated Goat anti-Rabbit IgG (H+L) (AS014) at 1:10000 dilution.

Lysates/proteins: 25 µg per lane.

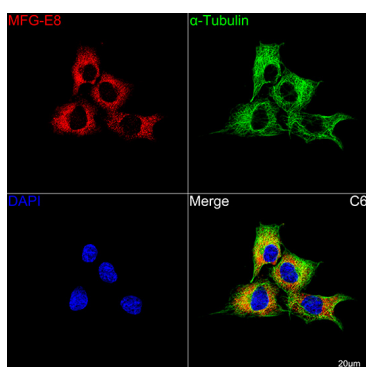
Blocking buffer: 3% nonfat dry milk in TBST.

Detection: ECL Basic Kit (RM00020).

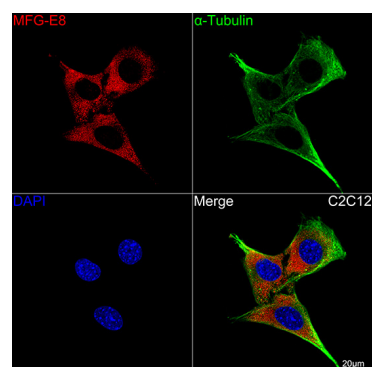
Exposure time: 10s.



Confocal imaging of U-2 OS cells using MFG-E8 Rabbit mAb (A25171-MA1, dilution 1:200) followed by a further incubation with Cy3 Goat Anti-Rabbit IgG (H+L) (AS007, dilution 1:500) (Red). The cells were counterstained with α-tubulin Mouse mAb (AC012, dilution 1:400) followed by incubation with ABflo® 488-conjugated Goat Anti-Mouse IgG (H+L) Ab (AS076, dilution 1:500) (Green). DAPI was used for nuclear staining (Blue). Objective: 100x.



Confocal imaging of C6 cells using MFG-E8 Rabbit mAb (A25171-MA1, dilution 1:200) followed by a further incubation with Cy3 Goat Anti-Rabbit IgG (H+L) (AS007, dilution 1:500) (Red). The cells were counterstained with α-tubulin Mouse mAb (AC012, dilution 1:400) followed by incubation with ABflo® 488-conjugated Goat Anti-Mouse IgG (H+L) Ab (AS076, dilution 1:500) (Green). DAPI was used for nuclear staining (Blue). Objective: 100x.



Confocal imaging of C2C12 cells using MFG-E8 Rabbit mAb (A25171-MA1, dilution 1:200) followed by a further incubation with Cy3 Goat Anti-Rabbit IgG (H+L) (AS007, dilution 1:500) (Red). The cells were counterstained with α-tubulin Mouse mAb (AC012, dilution 1:400) followed by incubation with ABflo® 488-conjugated Goat Anti-Mouse IgG (H+L) Ab (AS076, dilution 1:500) (Green). DAPI was used for nuclear staining (Blue). Objective: 100x.