

[KD Validated] METTL3 Rabbit mAb

Catalog No.: A26858 **Recombinant**

Basic Information

Observed MW

75kDa

Calculated MW

64kDa

Category

Primary antibody

Applications

WB,IHC-P,IP,CHIP,ELISA

Cross-Reactivity

Human, Mouse, Rat

CloneNo number

ARC66900

Background

This gene encodes the 70 kDa subunit of MT-A which is part of N6-adenosine-methyltransferase. This enzyme is involved in the posttranscriptional methylation of internal adenosine residues in eukaryotic mRNAs, forming N6-methyladenosine.

Recommended Dilutions

WB 1:5000 - 1:10000

IHC-P 1:200 - 1:2000

IP 0.5µg-4µg antibody for
200µg-400µg extracts of
whole cells

ELISA Recommended starting
concentration is 1 µg/mL.
Please optimize the
concentration based on
your specific assay
requirements.

Immunogen Information

Gene ID

56339

Swiss Prot

Q86U44


Immunogen

Recombinant fusion protein containing a sequence corresponding to amino acids 1-156 of human METTL3 (NP_062826.2).

Synonyms

M6A; IME4; Spo8; MT-A70; hMETTL3

Contact

 | 400-999-6126

 | cn.market@abclonal.com.cn

 | www.abclonal.com.cn

Product Information

Source

Rabbit

Isotype

IgG

Purification

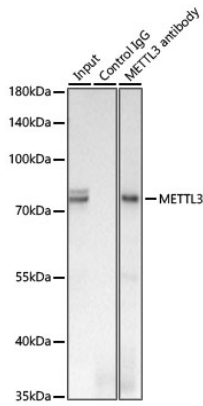
Affinity purification

Storage

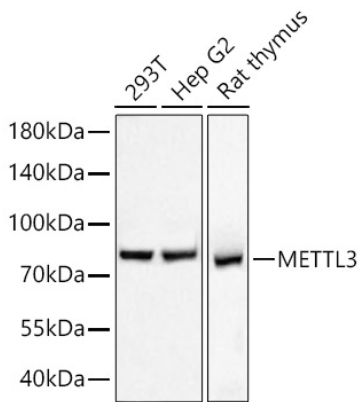
Store at -20°C. Avoid freeze / thaw cycles.

Buffer: PBS with 0.09% Sodium azide,0.05% BSA,50% glycerol,pH7.3.

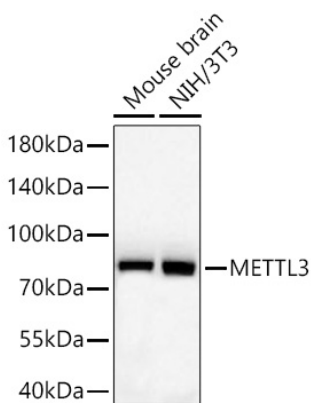
Validation Data



Immunoprecipitation of METTL3 from 300 µg extracts of HepG2 cells was performed using 0.5 µg of [KD Validated] METTL3 Rabbit mAb (A26858). Rabbit IgG isotype control (AC042) was used to precipitate the Control IgG sample. IP samples were eluted with 1X Laemmli Buffer. The Input lane represents 10% of the total input. Western blot analysis of immunoprecipitates was conducted using [KD Validated] METTL3 Rabbit mAb (A26858) at a dilution of 1 : 1000.

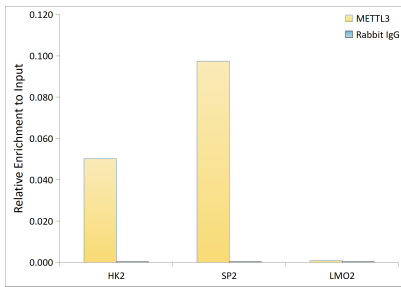


Western blot analysis of various lysates using [KD Validated] METTL3 Rabbit mAb (A26858) at 1:5000 dilution incubated overnight at 4°C.
Secondary antibody: HRP-conjugated Goat anti-Rabbit IgG (H+L) (AS014) at 1:10000 dilution.
Lysates/proteins: 25 µg per lane.
Blocking buffer: 3% nonfat dry milk in TBST.
Detection: ECL Basic Kit (RM00020).
Exposure time: 1s.

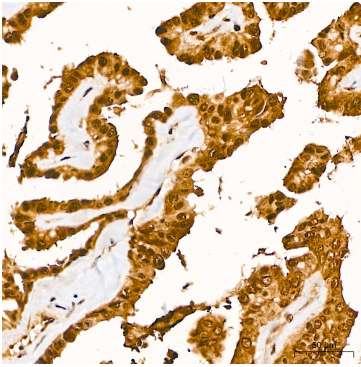


Western blot analysis of various lysates using [KD Validated] METTL3 Rabbit mAb (A26858) at 1:5000 dilution incubated overnight at 4°C.
Secondary antibody: HRP-conjugated Goat anti-Rabbit IgG (H+L) (AS014) at 1:10000 dilution.
Lysates/proteins: 25 µg per lane.
Blocking buffer: 3% nonfat dry milk in TBST.
Detection: ECL Basic Kit (RM00020).
Exposure time: 10s.

Validation Data



Chromatin immunoprecipitation was performed with 15 μ g of cross-linked chromatin from MCF7, using 3 μ g of [KD Validated] METTL3 Rabbit mAb (A26858) and Rabbit IgG isotype control (AC042). The enrichment of immunoprecipitated DNA at different genomic loci was examined by quantitative PCR. The histogram compares the ratio of the immunoprecipitated DNA to the input at given loci.



Immunohistochemistry analysis of paraffin-embedded Human thyroid cancer tissue using [KD Validated] METTL3 Rabbit mAb (A26858) at a dilution of 1:200 (40x lens). High pressure antigen retrieval performed with 0.01M Citrate Buffer (pH 6.0) prior to IHC staining.