

CDK20 Rabbit pAb

Catalog No.: A2686

Basic Information

Observed MW

Calculated MW

39kDa

Category

Primary antibody

Applications

ELISA, IHC-P

Cross-Reactivity

Rat

Background

The protein encoded by this gene contains a kinase domain most closely related to the cyclin-dependent protein kinases. The encoded kinase may activate cyclin-dependent kinase 2 and is involved in cell growth. Alternatively spliced transcript variants encoding distinct isoforms have been reported.

Recommended Dilutions

IHC-P 1:50 - 1:100

Immunogen Information

Gene ID

23552

Swiss Prot

Q8IZL9

Immunogen

A synthetic peptide corresponding to a sequence within amino acids 200-300 of human CDK20 (Q8IZL9).

Synonyms

P42; CCRK; CDCH; PNQALRE; CDK20

Contact

☎ | 400-999-6126

✉ | cn.market@abclonal.com.cn

🌐 | www.abclonal.com.cn

Product Information

Source

Rabbit

Isotype

IgG

Purification

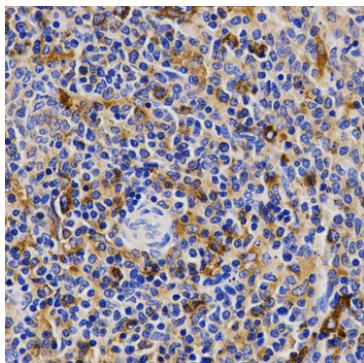
Affinity purification

Storage

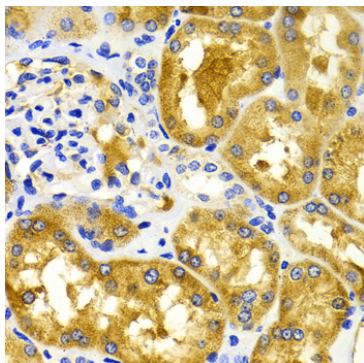
Store at -20°C. Avoid freeze / thaw cycles.

Buffer: PBS with 0.02% sodium azide, 50% glycerol, pH 7.3.

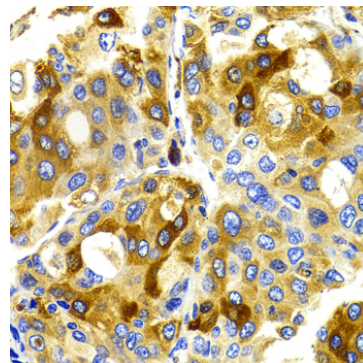
Validation Data



Immunohistochemistry analysis of paraffin-embedded rat spleen using CDK20 Rabbit pAb (A2686) at dilution of 1:200 (40x lens). Perform microwave antigen retrieval with 10 mM PBS buffer pH 7.2 before commencing with IHC staining protocol.



Immunohistochemistry analysis of paraffin-embedded human kidney using CDK20 Rabbit pAb (A2686) at dilution of 1:100 (40x lens). Perform microwave antigen retrieval with 10 mM PBS buffer pH 7.2 before commencing with IHC staining protocol.



Immunohistochemistry analysis of paraffin-embedded human liver cancer using CDK20 Rabbit pAb (A2686) at dilution of 1:100 (40x lens). Perform microwave antigen retrieval with 10 mM PBS buffer pH 7.2 before commencing with IHC staining protocol.