

# ABflo® 647 Rabbit anti-Mouse CD200/OX2 mAb

Catalog No.: A26860

## Basic Information

### Observed MW

### Calculated MW

31kDa

### Category

Primary antibody

### Applications

FC

### Cross-Reactivity

Mouse

### CloneNo number

ARC70039-ABflo647

### Conjugate

ABflo® 647. Ex:648nm. Em:664nm.

## Recommended Dilutions

FC 5 µl per 10<sup>6</sup> cells in  
100 µl volume

## Background

Predicted to enable protein binding activity involved in heterotypic cell-cell adhesion. Involved in negative regulation of cell population proliferation; negative regulation of macrophage activation; and negative regulation of neuroinflammatory response. Located in cell surface. Is expressed in several structures, including anterior naris; aorta; bone; nervous system; and retina. Used to study autoimmune disease. Orthologous to human CD200 (CD200 molecule).

## Immunogen Information

### Gene ID

17470

### Swiss Prot

O54901

### Immunogen

Recombinant fusion protein containing a sequence corresponding to amino acids 31-232 of mouse CD200/OX2 (NP\_034948.3).

### Synonyms

OX2; Mox2

## Contact

☎ | 400-999-6126

✉ | [cn.market@abclonal.com.cn](mailto:cn.market@abclonal.com.cn)

🌐 | [www.abclonal.com.cn](http://www.abclonal.com.cn)

## Product Information

### Source

Rabbit

### Isotype

IgG

### Purification

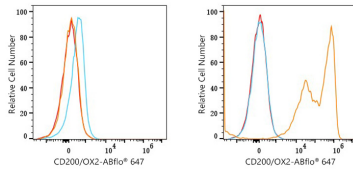
Affinity purification

### Storage

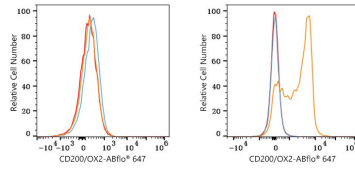
Store at 2-8°C. Avoid freeze.

Buffer: PBS with 0.09% Sodium azide, 0.2% BSA, pH7.3.

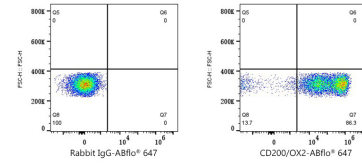
## Validation Data



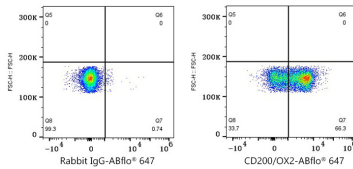
Flow cytometry:  $1 \times 10^6$  293T cells (negative control, left) and 293T (Transfection, right) cells were surface-stained with ABflo® 647 Rabbit anti-Mouse CD200 mAb (A26860, 5  $\mu$ l/Test, orange line) or ABflo® 647 Rabbit IgG isotype control (A22070, 5  $\mu$ l/Test, blue line). Non-fluorescently stained cells were used as blank control (red line).



Flow cytometry:  $1 \times 10^6$  RAW 264.7 cells (negative control, left) and BALB/c splenocytes (right) were surface-stained with ABflo® 647 Rabbit anti-Mouse CD200 mAb (A26860, 5  $\mu$ l/Test, orange line) or ABflo® 647 Rabbit IgG isotype control (A22070, 5  $\mu$ l/Test, blue line). Non-fluorescently stained cells were used as blank control (red line).



Flow cytometry:  $1 \times 10^6$  293T (Transfection) cells were surface-stained with ABflo® 647 Rabbit IgG isotype control (A22070, 5  $\mu$ l/Test, left) or ABflo® 647 Rabbit anti-Mouse CD200 mAb (A26860, 5  $\mu$ l/Test, right).



Flow cytometry:  $1 \times 10^6$  BALB/c splenocytes were surface-stained with ABflo® 647 Rabbit IgG isotype control (A22070, 5  $\mu$ l/Test, left) or ABflo® 647 Rabbit anti-Mouse CD200 mAb (A26860, 5  $\mu$ l/Test, right).