

# APC Rabbit anti-Mouse CD365/TIM-1 mAb

Catalog No.: A26862

## Basic Information

### Observed MW

### Calculated MW

33kDa

### Category

Primary antibody

### Applications

FC

### Cross-Reactivity

Mouse

### CloneNo number

ARC67677

### Conjugate

APC. Ex:650nm. Em:660nm.

## Background

Enables phosphatidylserine binding activity. Acts upstream of or within positive regulation of mast cell activation; response to lipopolysaccharide; and response to wounding. Located in brush border and cell surface. Is expressed in brain; dorsal aorta; liver; lung; and reproductive system. Human ortholog(s) of this gene implicated in atopic dermatitis. Orthologous to human HAVCR1 (hepatitis A virus cellular receptor 1).

## Recommended Dilutions

FC 5  $\mu$ l per  $10^6$  cells in  
100  $\mu$ l volume

## Immunogen Information

### Gene ID

171283

### Swiss Prot

Q5QNS5

### Immunogen

Recombinant protein (or fragment). This information is considered to be commercially sensitive.

### Synonyms

Tim1; KIM-1; TIM-1; Timd1; TIM-1/KIM-1/HAVCR

## Contact

 | 400-999-6126

 | [cn.market@abclonal.com.cn](mailto:cn.market@abclonal.com.cn)

 | [www.abclonal.com.cn](http://www.abclonal.com.cn)

## Product Information

### Source

Rabbit

### Isotype

IgG

### Purification

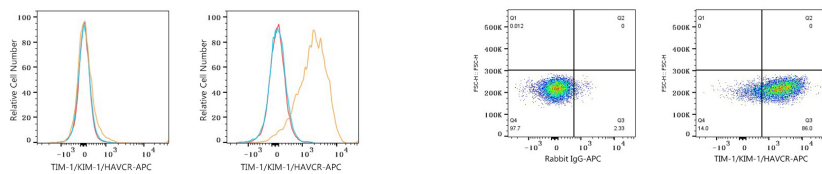
Affinity purification

### Storage

Store at 2-8°C. Avoid freeze.

Buffer: PBS with 0.09% Sodium azide, 0.2% BSA, pH7.3.

## Validation Data



Flow cytometry:  $1 \times 10^6$  C57BL/6 Mouse splenocytes (negative control, left) and A20 cells (right) were surface-stained with APC Rabbit anti-Mouse TIM-1/KIM-1/HAVCR mAb (A26862, 5  $\mu$ l/Test, orange line) or APC Rabbit IgG isotype control (A24173, 5  $\mu$ l/Test, blue line). Non-fluorescently stained cells were used as blank control (red line).

Flow cytometry:  $1 \times 10^6$  A20 cells were surface-stained with APC Rabbit IgG isotype control (A24173, 5  $\mu$ l/Test, left) or APC Rabbit anti-Mouse TIM-1/KIM-1/HAVCR mAb (A26862, 5  $\mu$ l/Test, right).