

FITC Rabbit anti-Human CD10 mAb

Catalog No.: A26865

Basic Information

Observed MW

Calculated MW

86kDa

Category

Primary antibody

Applications

FC

Cross-Reactivity

Human

CloneNo number

ARC55330-FITC

Conjugate

FITC. Ex:491nm. Em:516nm.

Recommended Dilutions

FC 5 μ l per 10^6 cells in
100 μ l volume

Background

The protein encoded by this gene is a type II transmembrane glycoprotein and a common acute lymphocytic leukemia antigen that is an important cell surface marker in the diagnosis of human acute lymphocytic leukemia (ALL). The encoded protein is present on leukemic cells of pre-B phenotype, which represent 85% of cases of ALL. This protein is not restricted to leukemic cells, however, and is found on a variety of normal tissues. The protein is a neutral endopeptidase that cleaves peptides at the amino side of hydrophobic residues and inactivates several peptide hormones including glucagon, enkephalins, substance P, neurotensin, oxytocin, and bradykinin.

Immunogen Information

Gene ID

4311

Swiss Prot

P08473

Immunogen

Recombinant fusion protein containing a sequence corresponding to amino acids 52-750 of human CD10 (NP_000893.2).

Synonyms

NEP; SFE; CD10; CALLA; CMT2T; SCA43

Contact

☎ | 400-999-6126

✉ | cn.market@abclonal.com.cn

🌐 | www.abclonal.com.cn

Product Information

Source

Rabbit

Isotype

IgG

Purification

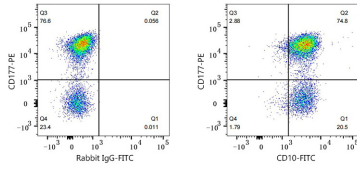
Affinity purification

Storage

Store at 2-8°C. Avoid freeze.

Buffer: PBS with 0.09% Sodium azide, 0.2% BSA, pH7.3.

Validation Data



Flow cytometry: 1×10^6 Human peripheral blood granulocytes were surface-stained with PE Rabbit anti-Human CD177 mAb (A26896, 5 μ l/Test) and FITC Rabbit IgG isotype control (A25616, 5 μ l/Test, left) or FITC Rabbit anti-Human CD10 mAb (A26865, 5 μ l/Test, right).