

ABflo® 500 Rabbit anti-Human/Monkey CD14 mAb

Catalog No.: A26871

Basic Information

Observed MW

Calculated MW

40kDa

Category

Primary antibody

Applications

FC

Cross-Reactivity

Human, Cynomolgus

CloneNo number

ARC65657

Conjugate

ABflo® 500. Ex:410nm. Em:501nm.

Background

The protein encoded by this gene is a surface antigen that is preferentially expressed on monocytes/macrophages. It cooperates with other proteins to mediate the innate immune response to bacterial lipopolysaccharide, and to viruses. This gene has been identified as a target candidate in the treatment of SARS-CoV-2-infected patients to potentially lessen or inhibit a severe inflammatory response. Alternative splicing results in multiple transcript variants encoding the same protein.

Recommended Dilutions

FC 5 µl per 10⁶ cells in
100 µl volume

Immunogen Information

Gene ID

929

Swiss Prot

P08571

Immunogen

Recombinant protein (or fragment). This information is considered to be commercially sensitive.

Synonyms

CD14

Contact

☎ | 400-999-6126

✉ | cn.market@abclonal.com.cn

🌐 | www.abclonal.com.cn

Product Information

Source

Rabbit

Isotype

IgG

Purification

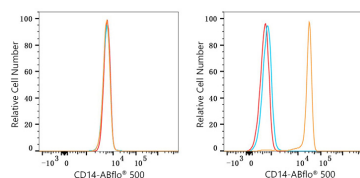
Affinity purification

Storage

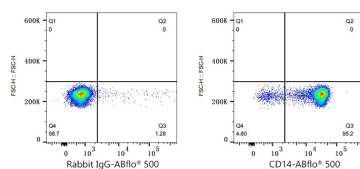
Store at 2-8°C. Avoid freeze.

Buffer: PBS with 0.09% Sodium azide, 0.2% BSA, pH7.3.

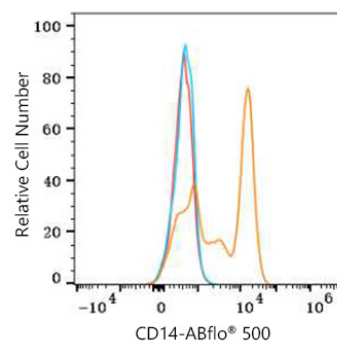
Validation Data



Flow cytometry: 1×10^6 HUVEC cells (negative control, left) and Human PBMC (right) were surface-stained with ABflo® 500 Rabbit anti-Human CD14 mAb (A26871, 5 μ l/Test, orange line) or ABflo® 500 Rabbit IgG isotype control (A25972, 5 μ l/Test, blue line). Non-fluorescently stained cells were used as blank control (red line).



Flow cytometry: 1×10^6 Human PBMC were surface-stained with ABflo® 500 Rabbit IgG isotype control (A25972, 5 μ l/Test, left) or ABflo® 500 Rabbit anti-Human CD14 mAb (A26871, 5 μ l/Test, right).



Flow cytometry: 1×10^6 Cynomolgus PBMC were surface-stained with ABflo® 500 Rabbit anti-Human/Monkey CD14 mAb (A26871, 5 μ l/Test, orange line) or ABflo® 500 Rabbit IgG isotype control (A25972, 5 μ l/Test, blue line). Non-fluorescently stained cells were used as blank control (red line). Cells in the Monocyte gate were used for analysis.