

ABflo® 647 Rabbit anti-Human TREM1 mAb

Catalog No.: A26873

Basic Information

Observed MW

Calculated MW

18kDa/26kDa

Category

Primary antibody

Applications

FC

Cross-Reactivity

Human

CloneNo number

ARC67283-ABflo647

Conjugate

ABflo® 647. Ex:648nm. Em:664nm.

Recommended Dilutions

FC 5 µl per 10⁶ cells in
100 µl volume

Background

This gene encodes a receptor belonging to the Ig superfamily that is expressed on myeloid cells. This protein amplifies neutrophil and monocyte-mediated inflammatory responses triggered by bacterial and fungal infections by stimulating release of pro-inflammatory chemokines and cytokines, as well as increased surface expression of cell activation markers. Alternatively spliced transcript variants encoding different isoforms have been noted for this gene.

Immunogen Information

Gene ID

54210

Swiss Prot

Q9NP99

Immunogen

Recombinant fusion protein containing a sequence corresponding to amino acids 21-200 of human TREM1 (NP_061113.1).

Synonyms

CD354; TREM-1

Contact

 | 400-999-6126

 | cn.market@abclonal.com.cn

 | www.abclonal.com.cn

Product Information

Source

Rabbit

Isotype

IgG

Purification

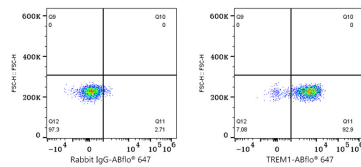
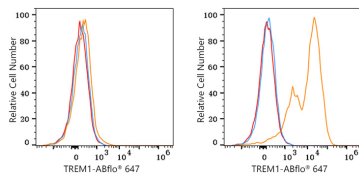
Affinity purification

Storage

Store at 2-8°C. Avoid freeze.

Buffer: PBS with 0.03% proclin300,0.2% BSA,pH7.3.

Validation Data



Flow cytometry: 1×10^6 293T cells (negative control, left) and 293T (Transfection, right) cells were surface-stained with ABflo® 647 Rabbit anti-Human TREM1 mAb (A26873, 5 μ l/Test, orange line) or ABflo® 647 Rabbit IgG isotype control (A22070, 5 μ l/Test, blue line). Non-fluorescently stained cells were used as blank control (red line).

Flow cytometry: 1×10^6 Human PBMC were surface-stained with ABflo® 647 Rabbit IgG isotype control (A22070, 5 μ l/Test, left) or ABflo® 647 Rabbit anti-Human TREM1 mAb (A26873, 5 μ l/Test, right). Cells in the monocyte gate were used for analysis.