

# APC Mouse anti-Human CD11b mAb

Catalog No.: A26893

## Basic Information

### Observed MW

### Calculated MW

127kDa

### Category

Primary antibody

### Applications

FC

### Cross-Reactivity

Human

### CloneNo number

AMC0709-APC

### Conjugate

APC. Ex:650nm. Em:660nm.

## Recommended Dilutions

FC 5  $\mu$ l per  $10^6$  cells in  
100  $\mu$ l volume

## Background

This gene encodes the integrin alpha M chain. Integrins are heterodimeric integral membrane proteins composed of an alpha chain and a beta chain. This I-domain containing alpha integrin combines with the beta 2 chain (ITGB2) to form a leukocyte-specific integrin referred to as macrophage receptor 1 ('Mac-1'), or inactivated-C3b (iC3b) receptor 3 ('CR3'). The alpha M beta 2 integrin is important in the adherence of neutrophils and monocytes to stimulated endothelium, and also in the phagocytosis of complement coated particles. Multiple transcript variants encoding different isoforms have been found for this gene.

## Immunogen Information

### Gene ID

3684

### Swiss Prot

P11215

### Immunogen

Recombinant protein of human CD11b.

### Synonyms

CR3A; MO1A; CD11B; MAC-1; MAC1A; SLEB6

## Contact

 | 400-999-6126

 | [cn.market@abclonal.com.cn](mailto:cn.market@abclonal.com.cn)

 | [www.abclonal.com.cn](http://www.abclonal.com.cn)

## Product Information

### Source

Mouse

### Isotype

IgG

### Purification

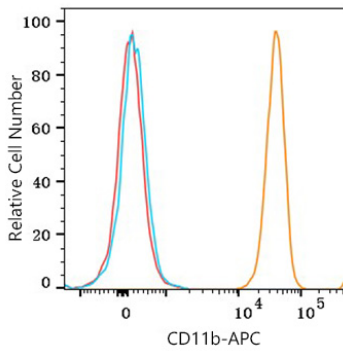
Affinity purification

### Storage

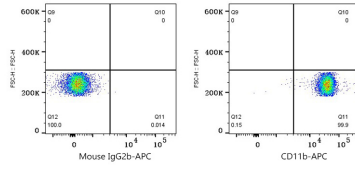
Store at 2-8°C. Avoid freeze.

Buffer: PBS with 0.09% Sodium azide, 0.2% BSA, pH7.3.

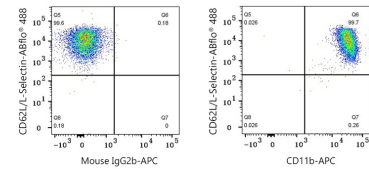
## Validation Data



Flow cytometry:  $1 \times 10^6$  Human peripheral blood granulocytes were surface-stained with APC Mouse anti-Human CD11b mAb (A26893, 5  $\mu$ l/Test, orange line) or APC Mouse IgG2b isotype control (A22884, 5  $\mu$ l/Test, blue line). Non-fluorescently stained cells were used as blank control (red line). Cells in the granulocytes gate were used for analysis.



Flow cytometry:  $1 \times 10^6$  Human peripheral blood granulocytes were surface-stained with APC Mouse IgG2b isotype control (A22884, 5  $\mu$ l/Test, left) or APC Mouse anti-Human CD11b mAb (A26893, 5  $\mu$ l/Test, right). Cells in the granulocytes gate were used for analysis.



Flow cytometry:  $1 \times 10^6$  Human peripheral blood granulocytes were surface-stained with ABflo® 488 Rabbit anti-Human CD62L/L-Selectin mAb (A23020, 5  $\mu$ l/Test) and APC Mouse IgG2b isotype control (A22884, 5  $\mu$ l/Test, left) or APC Mouse anti-Human CD11b mAb (A26893, 5  $\mu$ l/Test, right). Cells in the granulocytes gate were used for analysis.