

ABflo® 488 Mouse anti-Human CD11b mAb

Catalog No.: A26894

Basic Information

Observed MW

Calculated MW
127kDa

Category
Primary antibody

Applications
FC

Cross-Reactivity
Human

CloneNo number
AMC0709-ABf488

Conjugate
ABflo® 488. Ex:491nm. Em:516nm.

Recommended Dilutions

FC 5 µl per 10⁶ cells in
100 µl volume

Background

This gene encodes the integrin alpha M chain. Integrins are heterodimeric integral membrane proteins composed of an alpha chain and a beta chain. This I-domain containing alpha integrin combines with the beta 2 chain (ITGB2) to form a leukocyte-specific integrin referred to as macrophage receptor 1 ('Mac-1'), or inactivated-C3b (iC3b) receptor 3 ('CR3'). The alpha M beta 2 integrin is important in the adherence of neutrophils and monocytes to stimulated endothelium, and also in the phagocytosis of complement coated particles. Multiple transcript variants encoding different isoforms have been found for this gene.

Immunogen Information

Gene ID 3684	Swiss Prot P11215
------------------------	-----------------------------

Immunogen
Recombinant protein of human CD11b.

Synonyms
CR3A; MO1A; CD11B; MAC-1; MAC1A; SLEB6

Contact

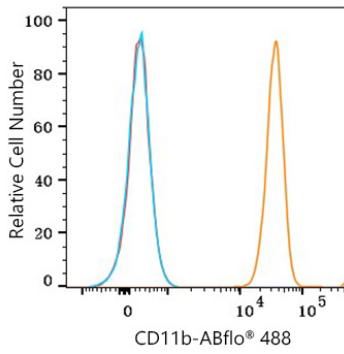
		400-999-6126
		cn.market@abclonal.com.cn
		www.abclonal.com.cn

Product Information

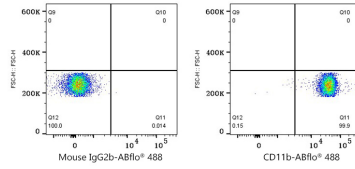
Source Mouse	Isotype IgM	Purification Affinity purification
------------------------	-----------------------	--

Storage
Store at 2-8°C. Avoid freeze.
Buffer: PBS with 0.09% Sodium azide,0.2% BSA,pH7.3.

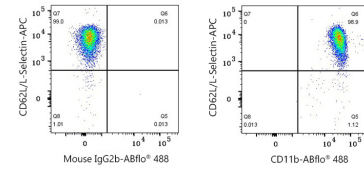
Validation Data



Flow cytometry: 1×10^6 Human peripheral blood granulocytes were surface-stained with ABflo® 488 Mouse anti-Human CD11b mAb (A26894, 5 μ l/Test, orange line) or ABflo® 488 Mouse IgG2b isotype control (A25490, 5 μ l/Test, blue line). Non-fluorescently stained cells were used as blank control (red line). Cells in the granulocytes gate were used for analysis.



Flow cytometry: 1×10^6 Human peripheral blood granulocytes were surface-stained with ABflo® 488 Mouse IgG2b isotype control (A25490, 5 μ l/Test, left) or ABflo® 488 Mouse anti-Human CD11b mAb (A26894, 5 μ l/Test, right). Cells in the granulocytes gate were used for analysis.



Flow cytometry: 1×10^6 Human peripheral blood granulocytes were surface-stained with APC Rabbit anti-Human CD62L/Selectin mAb (A26124, 5 μ l/Test) and ABflo® 488 Mouse IgG2b isotype control (A25490, 5 μ l/Test, left) or ABflo® 488 Mouse anti-Human CD11b mAb (A26894, 5 μ l/Test, right). Cells in the granulocytes gate were used for analysis.