

# APC Rabbit anti-Human CD177 mAb

Catalog No.: A26895

## Basic Information

### Observed MW

### Calculated MW

15kDa/27kDa/46kDa

### Category

Primary antibody

### Applications

FC

### Cross-Reactivity

Human

### CloneNo number

ARC62693-APC

### Conjugate

APC. Ex:650nm. Em:660nm.

## Recommended Dilutions

FC 5  $\mu$ l per  $10^6$  cells in  
100  $\mu$ l volume

## Background

This gene encodes a glycosyl-phosphatidylinositol (GPI)-linked cell surface glycoprotein that plays a role in neutrophil activation. The protein can bind platelet endothelial cell adhesion molecule-1 and function in neutrophil transmigration. Mutations in this gene are associated with myeloproliferative diseases. Over-expression of this gene has been found in patients with polycythemia rubra vera. Autoantibodies against the protein may result in pulmonary transfusion reactions, and it may be involved in Wegener's granulomatosis. A related pseudogene, which is adjacent to this gene on chromosome 19, has been identified.

## Immunogen Information

### Gene ID

57126

### Swiss Prot

Q8N6Q3

### Immunogen

Recombinant fusion protein containing a sequence corresponding to amino acids 22-407 of human CD177(NP\_065139.2).

### Synonyms

NB1; PRV1; HNA2A; PRV-1; HNA-2a; NB1 GP

## Contact

☎ | 400-999-6126

✉ | [cn.market@abclonal.com.cn](mailto:cn.market@abclonal.com.cn)

🌐 | [www.abclonal.com.cn](http://www.abclonal.com.cn)

## Product Information

### Source

Rabbit

### Isotype

IgG

### Purification

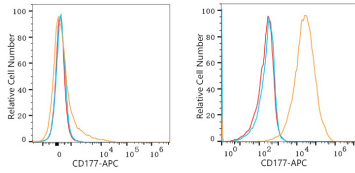
Affinity purification

### Storage

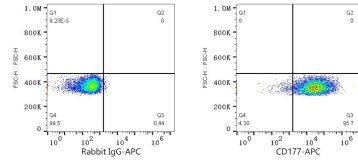
Store at 2-8°C. Avoid freeze.

Buffer: PBS with 0.09% Sodium azide,0.2% BSA,pH7.3.

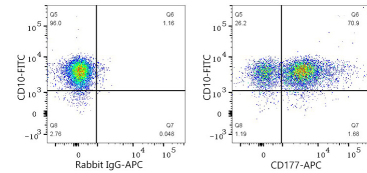
## Validation Data



Flow cytometry:  $1 \times 10^6$  T-47D cells (negative control, left) and RPMI-8226 cells (right) were surface-stained with APC Rabbit anti-Human CD177 mAb (A26895, 5  $\mu$ l/Test, orange line) or APC Rabbit IgG isotype control (A24173, 5  $\mu$ l/Test, blue line). Non-fluorescently stained cells were used as blank control (red line).



Flow cytometry:  $1 \times 10^6$  RPMI-8226 cells were surface-stained with APC Rabbit IgG isotype control (A24173, 5  $\mu$ l/Test, left) or APC Rabbit anti-Human CD177 mAb (A26895, 5  $\mu$ l/Test, right).



Flow cytometry:  $1 \times 10^6$  Human peripheral blood granulocytes were surface-stained with FITC Rabbit anti-Human CD10 mAb (A26865, 5  $\mu$ l/Test) and APC Rabbit IgG isotype control (A24173, 5  $\mu$ l/Test, left) or APC Rabbit anti-Human CD177 mAb (A26895, 5  $\mu$ l/Test, right). Cells in the lymphocytes gate were used for analysis.