

PE Rat anti-Mouse Ly-6G/Ly-6C (Gr-1) mAb

Catalog No.: A26900

Basic Information

Observed MW

Calculated MW
14kDa

Category
Primary antibody

Applications
FC

Cross-Reactivity
Mouse

CloneNo number
ATC0033-PE

Conjugate
PE. Ex:565nm. Em:574nm.

Background

Located in external side of plasma membrane.

Recommended Dilutions

FC 5 μ l per 10^6 cells in
100 μ l volume

Immunogen Information

Gene ID
546644/17067

Swiss Prot
P35461/P0CW02

Immunogen
Recombinant protein of mouse Ly-6G/Ly-6C (Gr-1).

Synonyms
Gr1; Gr-1; Ly-6G

Contact

 | 400-999-6126

 | cn.market@abclonal.com.cn

 | www.abclonal.com.cn

Product Information

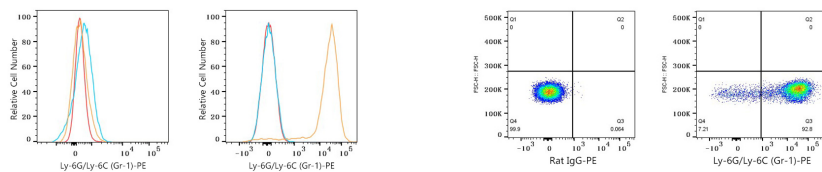
Source
Rat

Isotype
IgG

Purification
Affinity purification

Storage
Store at 2-8°C. Avoid freeze.
Buffer: PBS with 0.09% Sodium azide, 0.2% BSA, pH7.3.

Validation Data



Flow cytometry: 1×10^6 Neuro-2a cells (negative control, left) and C57BL/6 mouse bone marrow cells (right) were surface-stained with PE Rat anti-Mouse Ly-6G/Ly-6C (Gr-1) mAb (A26900, 5 μ l/Test, orange line) or PE Rat IgG isotype control (5 μ l/Test, blue line). Non-fluorescently stained cells were used as blank control (red line).

Flow cytometry: 1×10^6 C57BL/6 mouse bone marrow cells were surface-stained with PE Rat IgG isotype control (5 μ l/Test, left) or PE Rat anti-Mouse Ly-6G/Ly-6C (Gr-1) mAb (A26900, 5 μ l/Test, right).