

# ABflo® 488 Rat anti-Mouse Ly-6G/Ly-6C (Gr-1) mAb

Catalog No.: A26901

## Basic Information

### Observed MW

**Calculated MW**  
14kDa

**Category**  
Primary antibody

**Applications**  
FC

**Cross-Reactivity**  
Mouse

**CloneNo number**  
ATC0033-ABf488

**Conjugate**  
ABflo® 488. Ex:491nm. Em:516nm.

## Background

Located in external side of plasma membrane.

## Recommended Dilutions

**FC** 5 µl per 10<sup>6</sup> cells in  
100 µl volume

## Immunogen Information

**Gene ID**  
546644/17067

**Swiss Prot**  
P35461/P0CW02

**Immunogen**  
Recombinant protein of mouse Ly-6G/Ly-6C (Gr-1).

**Synonyms**  
Gr1; Gr-1; Ly-6G

## Contact

 | 400-999-6126

 | [cn.market@abclonal.com.cn](mailto:cn.market@abclonal.com.cn)

 | [www.abclonal.com.cn](http://www.abclonal.com.cn)

## Product Information

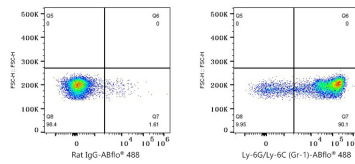
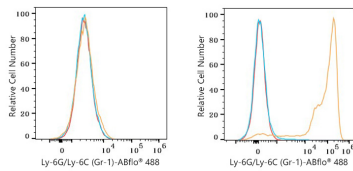
**Source**  
Rat

**Isotype**  
IgG

**Purification**  
Affinity purification

**Storage**  
Store at 2-8°C. Avoid freeze.  
Buffer: PBS with 0.09% Sodium azide,0.2% BSA,pH7.3.

## Validation Data



Flow cytometry:  $1 \times 10^6$  Neuro-2a cells (negative control, left) and C57BL/6 mouse bone marrow cells (right) were surface-stained with ABflo® 488 Rat anti-Mouse Ly-6G/Ly-6C (Gr-1) mAb (A26901,5  $\mu$ l/Test, orange line) or ABflo® 488 Rat IgG isotype control (5  $\mu$ l/Test, blue line). Non-fluorescently stained cells were used as blank control (red line).

Flow cytometry:  $1 \times 10^6$  C57BL/6 mouse bone marrow cells were surface-stained with ABflo® 488 Rat IgG isotype control (5  $\mu$ l/Test, left) or ABflo® 488 Rat anti-Mouse Ly-6G/Ly-6C (Gr-1) mAb (A26901,5  $\mu$ l/Test, right).