

# ABflo® 488 Mouse anti-Human CD1a mAb

Catalog No.: A26905

## Basic Information

### Observed MW

### Calculated MW

37kDa

### Category

Primary antibody

### Applications

FC

### Cross-Reactivity

Human

### CloneNo number

AMC0708-ABf488

### Conjugate

ABflo® 488. Ex:491nm. Em:516nm.

## Recommended Dilutions

FC 5 µl per 10<sup>6</sup> cells in  
100 µl volume

## Background

This gene encodes a member of the CD1 family of transmembrane glycoproteins, which are structurally related to the major histocompatibility complex (MHC) proteins and form heterodimers with beta-2-microglobulin. The CD1 proteins mediate the presentation of primarily lipid and glycolipid antigens of self or microbial origin to T cells. The human genome contains five CD1 family genes organized in a cluster on chromosome 1. The CD1 family members are thought to differ in their cellular localization and specificity for particular lipid ligands. The protein encoded by this gene localizes to the plasma membrane and to recycling vesicles of the early endocytic system. Alternative splicing results in multiple transcript variants.

## Immunogen Information

### Gene ID

909

### Swiss Prot

P06126

### Immunogen

A synthesized peptide derived from human CD1a.

### Synonyms

R4; T6; CD1; FCB6; HTA1

## Contact

☎ | 400-999-6126

✉ | [cn.market@abclonal.com.cn](mailto:cn.market@abclonal.com.cn)

🌐 | [www.abclonal.com.cn](http://www.abclonal.com.cn)

## Product Information

### Source

Mouse

### Isotype

IgM

### Purification

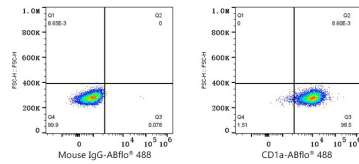
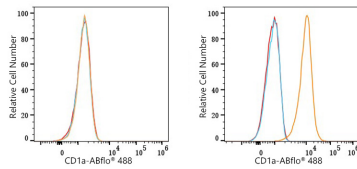
Affinity purification

### Storage

Store at 2-8°C. Avoid freeze.

Buffer: PBS with 0.09% Sodium azide, 0.2% BSA, pH7.3.

## Validation Data



Flow cytometry: 1X10<sup>6</sup> HeLa cells (negative control, left) and MOLT-4 cells (right) were surface-stained with ABflo® 488 Mouse anti-Human CD1a mAb (A26905, 5 µl/Test, orange line) or ABflo® 488 Mouse IgG isotype control (5 µl/Test, blue line). Non-fluorescently stained cells were used as blank control (red line).

Flow cytometry: 1X10<sup>6</sup> MOLT-4 cells were surface-stained with ABflo® 488 Mouse IgG isotype control (5 µl/Test, left) or ABflo® 488 Mouse anti-Human CD1a mAb (A26905, 5 µl/Test, right).