

ABflo® 610 Rabbit anti-Human CD26/DPP4 mAb

Catalog No.: A26908

Basic Information

Observed MW

Refer to figures

Calculated MW

88kDa

Category

Primary antibody

Applications

FC

Cross-Reactivity

Human

CloneNo number

ARC59223-ABflo610

Conjugate

ABflo® 610. Ex:421nm. Em:612nm.

Recommended Dilutions

FC 5 μ l per 10^6 cells in
100 μ l volume

Background

The DPP4 gene encodes dipeptidyl peptidase 4, which is identical to adenosine deaminase complexing protein-2, and to the T-cell activation antigen CD26. It is an intrinsic type II transmembrane glycoprotein and a serine exopeptidase that cleaves X-proline dipeptides from the N-terminus of polypeptides. Dipeptidyl peptidase 4 is highly involved in glucose and insulin metabolism, as well as in immune regulation. This protein was shown to be a functional receptor for Middle East respiratory syndrome coronavirus (MERS-CoV), and protein modeling suggests that it may play a similar role with SARS-CoV-2, the virus responsible for COVID-19.

Immunogen Information

Gene ID

1803

Swiss Prot

P27487

Immunogen

Recombinant fusion protein containing a sequence corresponding to amino acids 29-766 of human CD26/DPP4 (NP_001926.2).

Synonyms

CD26; ADABP; ADCP2; DPPIV; TP103

Contact

☎ | 400-999-6126

✉ | cn.market@abclonal.com.cn

🌐 | www.abclonal.com.cn

Product Information

Source

Rabbit

Isotype

IgG

Purification

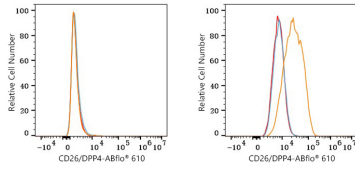
Affinity purification

Storage

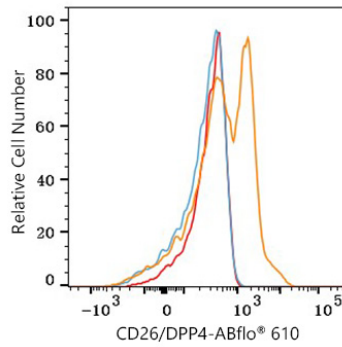
Store at 2-8°C. Avoid freeze.

Buffer: PBS with 0.09% Sodium azide, 0.2% BSA, pH7.3.

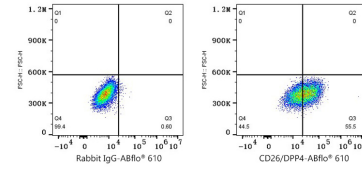
Validation Data



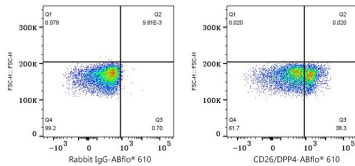
Flow cytometry: 1×10^6 K-562 cells (negative control, left) and NCI-H2452 [H2452] cells (right) were surface-stained with ABflo® 610 Rabbit anti-Human CD26/DPP4 mAb (A26908, 5 μ l/Test, orange line) or ABflo® 610 Rabbit IgG isotype control (A25826, 5 μ l/Test, blue line). Non-fluorescently stained cells were used as blank control (red line). Cells in the Lymphocytes gate were used for analysis.



Flow cytometry: 1×10^6 Human PBMC cells were surface-stained with ABflo® 610 Rabbit anti-Human CD26/DPP4 mAb (A26908, 5 μ l/Test, orange line) or ABflo® 610 Rabbit IgG isotype control (A25826, 5 μ l/Test, blue line). Non-fluorescently stained cells were used as blank control (red line). Cells in the Lymphocytes gate were used for analysis.



Flow cytometry: 1×10^6 NCI-H2452 [H2452] cells were surface-stained with ABflo® 610 Rabbit IgG isotype control (A25826, 5 μ l/Test, left) or ABflo® 610 Rabbit anti-Human CD26/DPP4 mAb (A26908, 5 μ l/Test, right).



Flow cytometry: 1×10^6 Human PBMC cells were surface-stained with ABflo® 610 Rabbit IgG isotype control (A25826, 5 μ l/Test, left) or ABflo® 610 Rabbit anti-Human CD26/DPP4 mAb (A26908, 5 μ l/Test, right). Cells in the Lymphocytes gate were used for analysis.