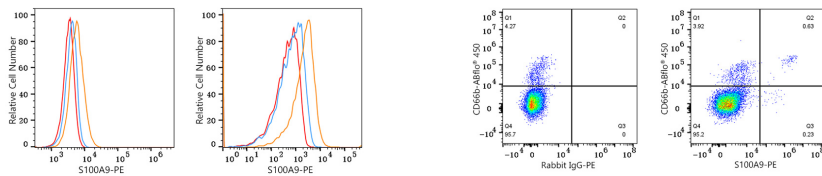




## Validation Data



Flow cytometry:  $1 \times 10^6$  RAW 264.7 cells (negative control, left) and C57BL/6 mouse splenocytes (right) were intracellularly-stained with PE Rabbit anti-Mouse S100A9 mAb (A26914, 5  $\mu$ l/Test, orange line) or PE Rabbit IgG isotype control (A24172, 5  $\mu$ l/Test, blue line). Non-fluorescently stained cells were used as blank control (red line).

Flow cytometry:  $1 \times 10^6$  C57BL/6 mouse splenocytes were intracellularly-stained with ABflo® 450 Rabbit anti-Mouse CD11b mAb (A26229, 5  $\mu$ l/Test) and PE Rabbit IgG isotype control (A24172, 5  $\mu$ l/Test, left) or PE Rabbit anti-Mouse S100A9 mAb (A26914, 5  $\mu$ l/Test, right). Cells in the lymphocyte gate were used for analysis.