

ABflo® 488 Rabbit anti-Mouse S100A9 mAb

Catalog No.: A26915

Basic Information

Observed MW

Calculated MW

13kDa

Category

Primary antibody

Applications

FC (intra)

Cross-Reactivity

Mouse

CloneNo number

ARC69927-ABflo488

Conjugate

ABflo® 488. Ex:491nm. Em:516nm.

Recommended Dilutions

FC (intra) 5 µl per 10⁶ cells in
100 µl volume

Background

Predicted to enable calcium ion binding activity and calcium-dependent protein binding activity. Involved in peptidyl-cysteine S-nitrosylation; positive regulation of blood coagulation; and regulation of translation. Acts upstream of or within several processes, including actin cytoskeleton reorganization; astrocyte development; and regulation of integrin biosynthetic process. Predicted to be located in cell junction; cytosol; and nucleoplasm. Predicted to be active in cytoplasm; extracellular space; and nucleus. Is expressed in several structures, including jaw; liver; otic capsule; skeleton; and spleen red pulp. Human ortholog(s) of this gene implicated in myocarditis. Orthologous to human S100A9 (S100 calcium binding protein A9).

Immunogen Information

Gene ID

20202

Swiss Prot

P31725

Immunogen

Recombinant fusion protein containing a sequence corresponding to amino acids 1-113 of mouse S100a9 (NP_033140.1).

Synonyms

p14; Cagb; GAGB; L1Ag; BEE22; MRP14; 60B8Ag

Contact

☎ | 400-999-6126

✉ | cn.market@abclonal.com.cn

🌐 | www.abclonal.com.cn

Product Information

Source

Rabbit

Isotype

IgG

Purification

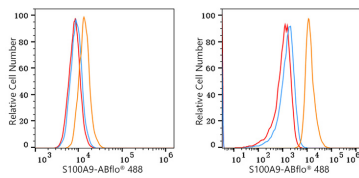
Affinity purification

Storage

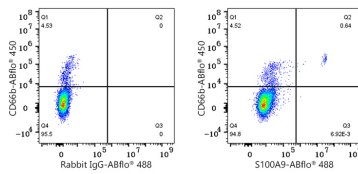
Store at 2-8°C. Avoid freeze.

Buffer: PBS with 0.09% Sodium azide, 0.2% BSA, pH7.3.

Validation Data



Flow cytometry: 1×10^6 RAW 264.7 cells (negative control, left) and C57BL/6 mouse splenocytes (right) were intracellularly-stained with ABflo® 488 Rabbit anti-Mouse S100A9 mAb (A26915, 5 μ l/Test, orange line) or ABflo® 488 Rabbit IgG isotype control (A22069, 5 μ l/Test, blue line). Non-fluorescently stained cells were used as blank control (red line).



Flow cytometry: 1×10^6 C57BL/6 mouse splenocytes were intracellularly-stained with ABflo® 450 Rabbit anti-Mouse CD11b mAb (A26229, 5 μ l/Test) and ABflo® 488 Rabbit IgG isotype control (A22069, 5 μ l/Test, left) or ABflo® 488 Rabbit anti-Mouse S100A9 mAb (A26915, 5 μ l/Test, right). Cells in the lymphocyte gate were used for analysis.