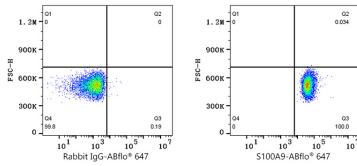


Validation Data



Flow cytometry: 1×10^6 C57BL/6 mouse splenocytes were intracellularly-stained with ABflo® 647 Rabbit IgG isotype control (A22070, 5 μ l/Test, left) or ABflo® 647 Rabbit anti-Mouse S100A9 mAb (A26916, 5 μ l/Test, right). Cells in the lymphocyte gate were used for analysis.