

# SMARCAD1 Rabbit mAb

Catalog No.: A26920 **Recombinant**

## Basic Information

### Observed MW

150kDa

### Calculated MW

68kDa/117kDa

### Category

Primary antibody

### Applications

WB, IHC-P, IF/ICC, ELISA

### Cross-Reactivity

Human, Mouse, Rat

### CloneNo number

ARC68058

## Background

This gene encodes a member of the SNF subfamily of helicase proteins. The encoded protein plays a critical role in the restoration of heterochromatin organization and propagation of epigenetic patterns following DNA replication by mediating histone H3/H4 deacetylation. Mutations in this gene are associated with adermatoglyphia. Alternatively spliced transcript variants encoding multiple isoforms have been observed for this gene.

## Recommended Dilutions

|               |   |
|---------------|---|
| <b>WB</b>     | 1:25000 - 1:50000   |
| <b>IHC-P</b>  | 1:200 - 1:800   |
| <b>IF/ICC</b> | 1:200 - 1:800   |
| <b>ELISA</b>  | Recommended starting concentration is 1 µg/mL. Please optimize the concentration based on your specific assay requirements. |

## Contact

|  |  |
|--|--|
|  | 400-999-6126   |
|  | cn.market@abclonal.com.cn                                    |
|  | <a href="http://www.abclonal.com.cn">www.abclonal.com.cn</a> |

## Immunogen Information

### Gene ID

56916

### Swiss Prot

Q9H4L7

### Immunogen

Recombinant Protein corresponding to a sequence within amino acids 928-1026 of human SMARCAD1(NP\_064544.2).

### Synonyms

HRZ; TYS; ETL1; HEL1; ADERM; BASNS

## Product Information

### Source

Rabbit

### Isotype

IgG

### Purification

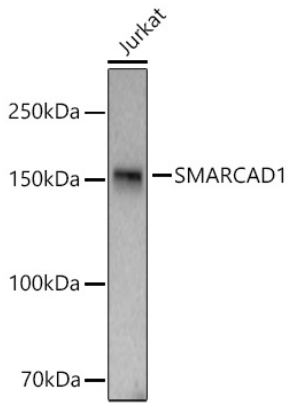
Affinity purification

### Storage

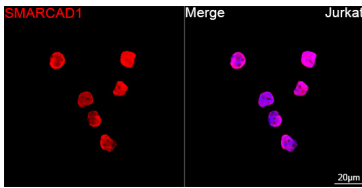
Store at -20°C. Avoid freeze / thaw cycles.

Buffer: PBS with 0.09% Sodium azide, 0.05% BSA, 50% glycerol, pH7.3.

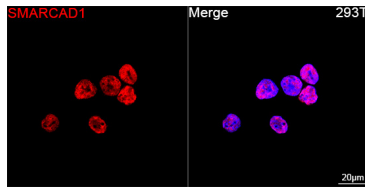
## Validation Data



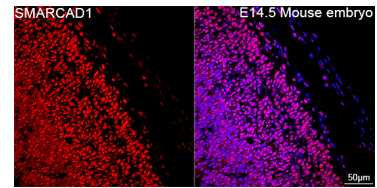
Western blot analysis of lysates from Jurkat cells using SMARCAD1 Rabbit mAb (A26920) at 1:50000 dilution incubated at room temperature for 1.5 hours.  
 Secondary antibody: HRP-conjugated Goat anti-Rabbit IgG (H+L) (AS014) at 1:10000 dilution.  
 Lysates/proteins: 25 µg per lane.  
 Blocking buffer: 3% nonfat dry milk in TBST.  
 Detection: ECL Basic Kit (RM00020).  
 Exposure time: 90s.



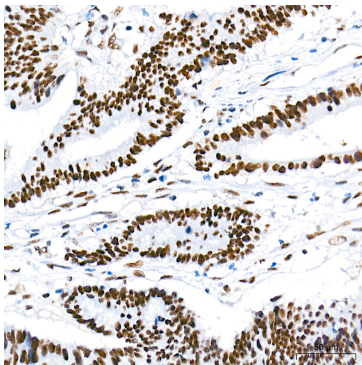
Confocal imaging of Jurkat cells using SMARCAD1 Rabbit mAb (A26920, dilution 1:200) followed by a further incubation with Cy3 Goat Anti-Rabbit IgG (H+L) (AS007, dilution 1:500) (Red). DAPI was used for nuclear staining (Blue). Objective: 100x.



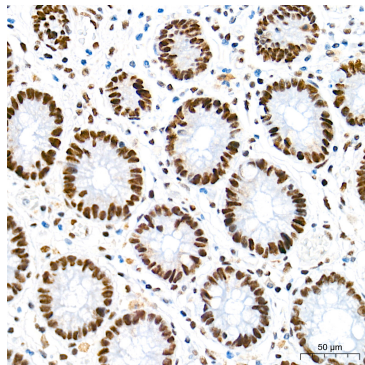
Confocal imaging of 293T cells using SMARCAD1 Rabbit mAb (A26920, dilution 1:200) followed by a further incubation with Cy3 Goat Anti-Rabbit IgG (H+L) (AS007, dilution 1:500) (Red). DAPI was used for nuclear staining (Blue). Objective: 100x.



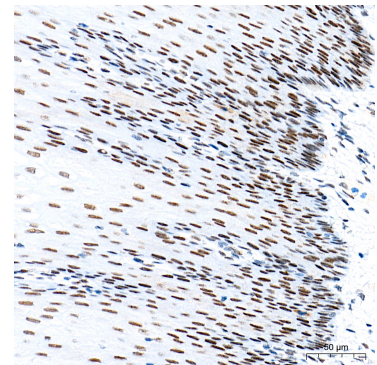
Confocal imaging of paraffin-embedded E14.5 Mouse embryo tissue using SMARCAD1 Rabbit mAb (A26920, dilution 1:200) followed by a further incubation with Cy3 Goat Anti-Rabbit IgG (H+L) (AS007, dilution 1:500) (Red). DAPI was used for nuclear staining (Blue). High pressure antigen retrieval performed with 0.01M Citrate Buffer (pH 6.0) prior to IF staining. Objective: 40x.



Immunohistochemistry analysis of paraffin-embedded Human colon carcinoma tissue using SMARCAD1 Rabbit mAb (A26920) at a dilution of 1:500 (40x lens). High pressure antigen retrieval performed with 0.01M Tris-EDTA Buffer (pH 9.0) prior to IHC staining.



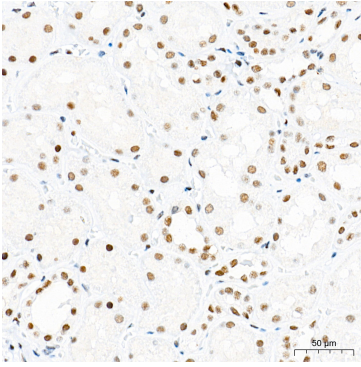
Immunohistochemistry analysis of paraffin-embedded Human colon tissue using SMARCAD1 Rabbit mAb (A26920) at a dilution of 1:500 (40x lens). High pressure antigen retrieval performed with 0.01M Tris-EDTA Buffer (pH 9.0) prior to IHC staining.



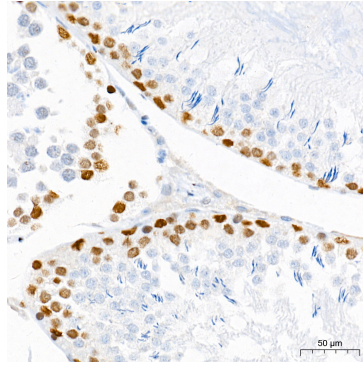
Immunohistochemistry analysis of paraffin-embedded Human esophagus tissue using SMARCAD1 Rabbit mAb (A26920) at a dilution of 1:500 (40x lens). High pressure antigen retrieval performed with 0.01M Tris-EDTA Buffer (pH 9.0) prior to IHC staining.

## Validation Data

---



Immunohistochemistry analysis of paraffin-embedded Human kidney tissue using SMARCAD1 Rabbit mAb (A26920) at a dilution of 1:500 (40x lens). High pressure antigen retrieval performed with 0.01M Tris-EDTA Buffer (pH 9.0) prior to IHC staining.



Immunohistochemistry analysis of paraffin-embedded Rat testis tissue using SMARCAD1 Rabbit mAb (A26920) at a dilution of 1:500 (40x lens). High pressure antigen retrieval performed with 0.01M Tris-EDTA Buffer (pH 9.0) prior to IHC staining.