

PE Mouse anti-Human CD15/SSEA-1 mAb

Catalog No.: A26930

Basic Information

Observed MW

Calculated MW

59kDa

Category

Primary antibody

Applications

FC

Cross-Reactivity

Human

CloneNo number

AMC0710-PE

Conjugate

PE. Ex:565nm. Em:574nm.

Background

The product of this gene transfers fucose to N-acetyllactosamine polysaccharides to generate fucosylated carbohydrate structures. It catalyzes the synthesis of the non-sialylated antigen, Lewis x (CD15).

Recommended Dilutions

FC 5 μ l per 10^6 cells in
100 μ l volume

Immunogen Information

Gene ID

2526

Swiss Prot

P22083

Immunogen

A synthesized peptide derived from human CD15/SSEA-1.

Synonyms

LeX; CD15; ELFT; FCT3A; FUTIV; SSEA-1; FUC-TIV

Contact

 | 400-999-6126

 | cn.market@abclonal.com.cn

 | www.abclonal.com.cn

Product Information

Source

Mouse

Isotype

IgM

Purification

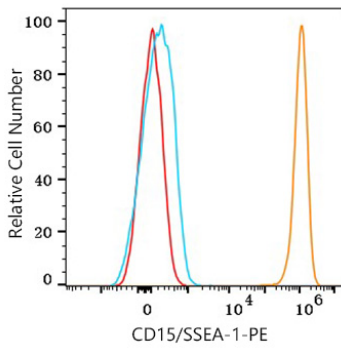
Affinity purification

Storage

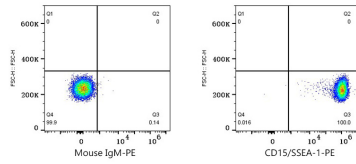
Store at 2-8°C. Avoid freeze.

Buffer: PBS with 0.09% Sodium azide, 0.2% BSA, pH7.3.

Validation Data



Flow cytometry: 1×10^6 Human peripheral blood granulocytes were surface-stained with PE Mouse anti-Human CD15/SSEA-1 mAb (A26930, 5 μ l/Test, orange line) or PE Mouse IgM isotype control (5 μ l/Test, blue line). Non-fluorescently stained cells were used as blank control (red line). Cells in the granulocytes gate were used for analysis.



Flow cytometry: 1×10^6 Human peripheral blood granulocytes were surface-stained with PE Mouse IgM isotype control (5 μ l/Test, left) or PE Mouse anti-Human CD15/SSEA-1 mAb (A26930, 5 μ l/Test, right). Cells in the granulocytes gate were used for analysis.