

# APC/Cyanine7 Rabbit anti-Mouse CD11b mAb

Catalog No.: A26935

## Basic Information

### Observed MW

Refer to figures

### Calculated MW

127kDa

### Category

Primary antibody

### Applications

FC

### Cross-Reactivity

Mouse

### CloneNo number

ARC63899

### Conjugate

APC-Cy7. Ex:651nm. Em:779nm.

## Recommended Dilutions

**FC** 5  $\mu$ l per  $10^6$  cells in  
100  $\mu$ l volume

## Background

Enables complement component C3b binding activity; heparan sulfate proteoglycan binding activity; and heparin binding activity. Contributes to cargo receptor activity. Involved in several processes, including central nervous system development; endocytosis; and positive regulation of neuron death. Acts upstream of or within several processes, including activated T cell proliferation; leukocyte migration; and microglia development. Located in external side of plasma membrane and nucleus. Is integral component of membrane. Part of integrin alphaM-beta2 complex. Is expressed in several structures, including central nervous system; heart; lymphatic vessel; thymus; and yolk sac. Human ortholog(s) of this gene implicated in lupus nephritis. Orthologous to human ITGAM (integrin subunit alpha M).

## Immunogen Information

### Gene ID

16409

### Swiss Prot

P05555

### Immunogen

Recombinant protein (or fragment). This information is considered to be commercially sensitive.

### Synonyms

CR3; CR3A; MAC1; Cd11b; Ly-40; Mac-1; Mac-1a; CD11b/CD18; F730045J24Rik

## Contact

☎ | 400-999-6126

✉ | [cn.market@abclonal.com.cn](mailto:cn.market@abclonal.com.cn)

🌐 | [www.abclonal.com.cn](http://www.abclonal.com.cn)

## Product Information

### Source

Rabbit

### Isotype

IgG

### Purification

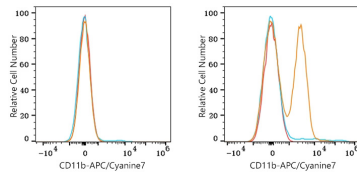
Affinity purification

### Storage

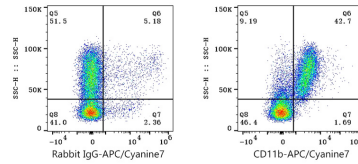
Store at 2-8°C. Avoid freeze.

Buffer: PBS with 0.09% Sodium azide, 0.2% BSA, pH7.3.

## Validation Data



Flow cytometry:  $1 \times 10^6$  C2C12 cells (negative control, left) and C57BL/6 mouse bone marrow cells (right) were surface-stained with APC/Cyanine7 Rabbit anti-Mouse CD11b mAb (A26935, 5  $\mu$ l/Test, orange line) or APC/Cyanine7 Rabbit IgG isotype control (5  $\mu$ l/Test, blue line). Non-fluorescently stained cells were used as blank control (red line).



Flow cytometry:  $1 \times 10^6$  C57BL/6 mouse bone marrow cells were surface-stained with APC/Cyanine7 Rabbit IgG isotype control (5  $\mu$ l/Test, left) or APC/Cyanine7 Rabbit anti-Mouse CD11b mAb (A26935, 5  $\mu$ l/Test, right).