

# ABflo® 450 Rabbit anti-Human CD2 mAb

Catalog No.: A26937

## Basic Information

### Observed MW

**Calculated MW**  
39kDa

**Category**  
Primary antibody

**Applications**  
FC

**Cross-Reactivity**  
Human

**CloneNo number**  
ARC59333-ABflo450

**Conjugate**  
ABflo® 450. Ex:406nm. Em:445nm.

## Background

The protein encoded by this gene is a surface antigen found on all peripheral blood T-cells. The encoded protein interacts with LFA3 (CD58) on antigen presenting cells to optimize immune recognition. A locus control region (LCR) has been found in the 3' flanking sequence of this gene.

## Recommended Dilutions

**FC** 5 µl per 10<sup>6</sup> cells in  
100 µl volume

## Immunogen Information

| Gene ID | Swiss Prot |
|---------|------------|
| 914     | P06729     |


### Immunogen

Recombinant fusion protein containing a sequence corresponding to amino acids 25-209 of human CD2 (NP\_001758.2).

### Synonyms

T11; SRBC; LFA-2

## Contact

 | 400-999-6126

 | [cn.market@abclonal.com.cn](mailto:cn.market@abclonal.com.cn)

 | [www.abclonal.com.cn](http://www.abclonal.com.cn)

## Product Information

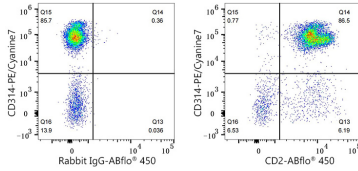
| Source | Isotype | Purification          |
|--------|---------|-----------------------|
| Rabbit | IgG     | Affinity purification |

### Storage

Store at 2-8°C. Avoid freeze.  
Buffer: PBS with 0.09% Sodium azide,0.2% BSA,pH7.3.

## Validation Data

---



Flow cytometry:  $1 \times 10^6$  Human PBMC were surface-stained with PE/Cyanine7 Rabbit anti-Human CD314 mAb (A26768, 5  $\mu$ l/Test) and ABflo® 450 Rabbit IgG isotype control (5  $\mu$ l/Test, left) or ABflo® 450 Rabbit anti-Human CD2 mAb (A26937, 5  $\mu$ l/Test, right). Cells in the lymphocyte gate were used for analysis.