

ABflo® 610 Rabbit anti-Human CD2 mAb

Catalog No.: A26938

Basic Information

Observed MW

Calculated MW

39kDa

Category

Primary antibody

Applications

FC

Cross-Reactivity

Human

CloneNo number

ARC59333

Conjugate

ABflo® 610. Ex:421nm. Em:612nm.

Recommended Dilutions

FC 5 µl per 10⁶ cells in
100 µl volume

Background

The protein encoded by this gene is a surface antigen found on all peripheral blood T-cells. The encoded protein interacts with LFA3 (CD58) on antigen presenting cells to optimize immune recognition. A locus control region (LCR) has been found in the 3' flanking sequence of this gene.

Immunogen Information

Gene ID

914

Swiss Prot

P06729

Immunogen

Recombinant protein (or fragment). This information is considered to be commercially sensitive.

Synonyms

T11; SRBC; LFA-2

Contact

☎ | 400-999-6126

✉ | cn.market@abclonal.com.cn

🌐 | www.abclonal.com.cn

Product Information

Source

Rabbit

Isotype

IgG

Purification

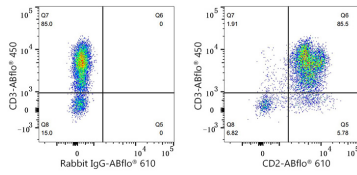
Affinity purification

Storage

Store at 2-8°C. Avoid freeze.

Buffer: PBS with 0.09% Sodium azide, 0.2% BSA, pH7.3.

Validation Data



Flow cytometry: 1×10^6 Human PBMC were surface-stained with ABflo® 450 Mouse anti-Human CD3 mAb (A25189, 5 μ l/Test) and ABflo® 610 Rabbit IgG isotype control (A25826, 5 μ l/Test, left) or ABflo® 610 Rabbit anti-Human CD2 mAb (A26938, 5 μ l/Test, right). Cells in the lymphocyte gate were used for analysis.