

# ABflo® 700 Rabbit anti-Human CD2 mAb

Catalog No.: A26939

## Basic Information

### Observed MW

**Calculated MW**  
39kDa

**Category**  
Primary antibody

**Applications**  
FC

**Cross-Reactivity**  
Human

**CloneNo number**  
ARC59333-ABflo700

**Conjugate**  
ABflo® 700. Ex:690nm. Em:713nm.

## Recommended Dilutions

**FC** 5 µl per 10<sup>6</sup> cells in  
100 µl volume

## Background

The protein encoded by this gene is a surface antigen found on all peripheral blood T-cells. The encoded protein interacts with LFA3 (CD58) on antigen presenting cells to optimize immune recognition. A locus control region (LCR) has been found in the 3' flanking sequence of this gene.

## Immunogen Information

<b>Gene ID</b> 914	<b>Swiss Prot</b> P06729
-----------------------	-----------------------------

**Immunogen**  
Recombinant fusion protein containing a sequence corresponding to amino acids 25-209 of human CD2 (NP\_001758.2).

**Synonyms**  
T11; SRBC; LFA-2

## Contact

	400-999-6126
	cn.market@abclonal.com.cn
	www.abclonal.com.cn

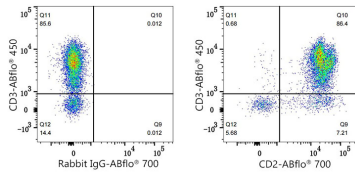
## Product Information

<b>Source</b> Rabbit	<b>Isotype</b> IgG	<b>Purification</b> Affinity purification
-------------------------	-----------------------	--

**Storage**  
Store at 2-8°C. Avoid freeze.  
Buffer: PBS with 0.09% Sodium azide,0.2% BSA,pH7.3.

## Validation Data

---



Flow cytometry:  $1 \times 10^6$  Human PBMC were surface-stained with ABflo® 450 Mouse anti-Human CD3 mAb (A25189, 5  $\mu$ l/Test) and ABflo® 700 Rabbit IgG isotype control (A25976, 5  $\mu$ l/Test, left) or ABflo® 700 Rabbit anti-Human CD2 mAb (A26939, 5  $\mu$ l/Test, right). Cells in the lymphocyte gate were used for analysis.