

K63-linkage Specific Ubiquitin Rabbit mAb

Catalog No.: A2703 **Recombinant**

Basic Information

Observed MW

Refer to figures

Calculated MW

26kDa

Category

Primary antibody

Applications

IHC-P, IF/ICC, ELISA

Cross-Reactivity

Human, Mouse, Rat

CloneNo number

ARC2652

Background

This gene encodes ubiquitin, one of the most conserved proteins known. Ubiquitin has a major role in targeting cellular proteins for degradation by the 26S proteasome. It is also involved in the maintenance of chromatin structure, the regulation of gene expression, and the stress response. Ubiquitin is synthesized as a precursor protein consisting of either polyubiquitin chains or a single ubiquitin moiety fused to an unrelated protein. This gene consists of three direct repeats of the ubiquitin coding sequence with no spacer sequence. Consequently, the protein is expressed as a polyubiquitin precursor with a final amino acid after the last repeat. An aberrant form of this protein has been detected in patients with Alzheimer's disease and Down syndrome. Pseudogenes of this gene are located on chromosomes 1, 2, 13, and 17. Alternative splicing results in multiple transcript variants.

Recommended Dilutions

IHC-P 1:50 - 1:200

IF/ICC 1:50 - 1:200

ELISA Recommended starting concentration is 1 µg/mL. Please optimize the concentration based on your specific assay requirements.

Immunogen Information

Gene ID

7314

Swiss Prot

P0CG47

Immunogen

Synthetic peptide. This information is considered to be commercially sensitive.

Synonyms

HEL-S-50; K63-linkage Specific Ubiquitin

Contact

 | 400-999-6126 | cn.market@abclonal.com.cn | www.abclonal.com.cn

Product Information

Source

Rabbit

Isotype

IgG

Purification

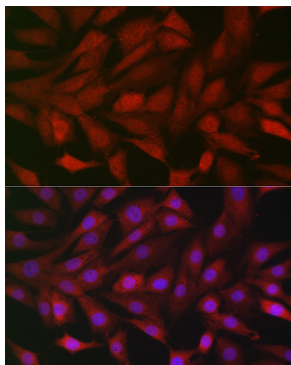
Affinity purification

Storage

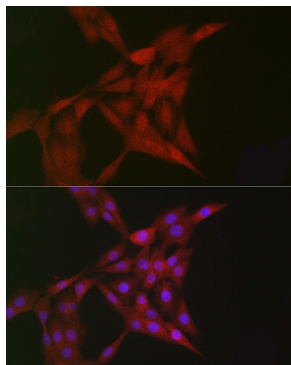
Store at -20°C. Avoid freeze / thaw cycles.

Buffer: PBS with 0.02% sodium azide, 0.05% BSA, 50% glycerol, pH7.3.

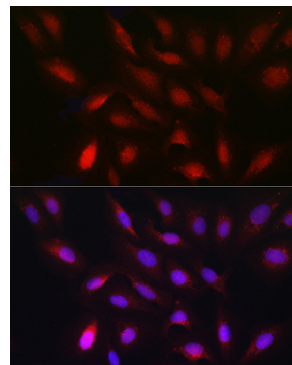
Validation Data



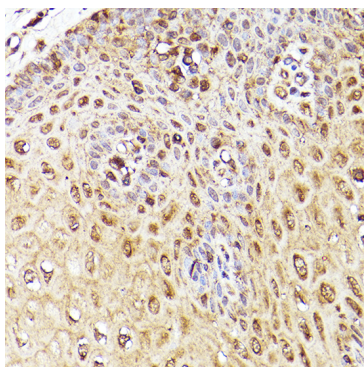
Immunofluorescence analysis of NIH/3T3 cells using K63-linkage Specific Ubiquitin Rabbit mAb (A2703) at dilution of 1:100 (40x lens). Secondary antibody: Cy3-conjugated Goat anti-Rabbit IgG (H+L) (AS007) at 1:500 dilution. Blue: DAPI for nuclear staining.



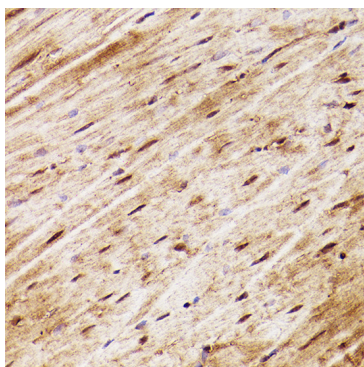
Immunofluorescence analysis of PC-12 cells using K63-linkage Specific Ubiquitin Rabbit mAb (A2703) at dilution of 1:100 (40x lens). Secondary antibody: Cy3-conjugated Goat anti-Rabbit IgG (H+L) (AS007) at 1:500 dilution. Blue: DAPI for nuclear staining.



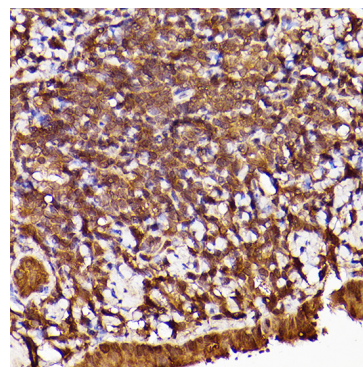
Immunofluorescence analysis of U2OS cells using K63-linkage Specific Ubiquitin Rabbit mAb (A2703) at dilution of 1:100 (40x lens). Secondary antibody: Cy3-conjugated Goat anti-Rabbit IgG (H+L) (AS007) at 1:500 dilution. Blue: DAPI for nuclear staining.



Immunohistochemistry analysis of paraffin-embedded Human esophagus using K63-linkage Specific Ubiquitin Rabbit mAb (A2703) at dilution of 1:100 (40x lens). High pressure antigen retrieval performed with 0.01M Citrate buffer (pH 6.0) prior to IHC staining.



Immunohistochemistry analysis of paraffin-embedded Mouse heart using K63-linkage Specific Ubiquitin Rabbit mAb (A2703) at dilution of 1:100 (40x lens). High pressure antigen retrieval performed with 0.01M Citrate buffer (pH 6.0) prior to IHC staining.



Immunohistochemistry analysis of paraffin-embedded Rat lung using K63-linkage Specific Ubiquitin Rabbit mAb (A2703) at dilution of 1:100 (40x lens). High pressure antigen retrieval performed with 0.01M Citrate buffer (pH 6.0) prior to IHC staining.