

CRMP1 Rabbit pAb

Catalog No.: A2705 **2 Publications**

Basic Information

Observed MW

62kDa

Calculated MW

62kDa

Category

Primary antibody

Applications

ELISA, WB, IF/ICC

Cross-Reactivity

Human, Mouse, Rat

Background

This gene encodes a member of a family of cytosolic phosphoproteins expressed exclusively in the nervous system. The encoded protein is thought to be a part of the semaphorin signal transduction pathway implicated in semaphorin-induced growth cone collapse during neural development. Alternative splicing results in multiple transcript variants.

Recommended Dilutions

| | |
|---------------|----------------|
| WB | 1:500 - 1:1000 |
| IF/ICC | 1:100 - 1:500 |

Immunogen Information

Gene ID

1400

Swiss Prot

Q14194

Immunogen

Recombinant fusion protein containing a sequence corresponding to amino acids 460-540 of human CRMP1 (NP_001304.1).

Synonyms

DRP1; DRP-1; CRMP-1; DPYSL1; ULIP-3; CRMP1

Contact

 | 400-999-6126

 | cn.market@abclonal.com.cn

 | www.abclonal.com.cn

Product Information

Source

Rabbit

Isotype

IgG

Purification

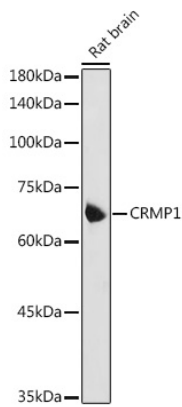
Affinity purification

Storage

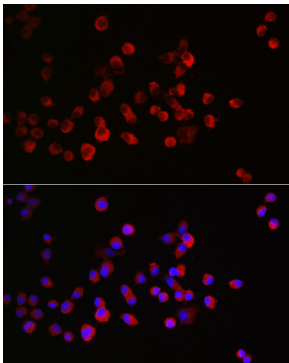
Store at -20°C. Avoid freeze / thaw cycles.

Buffer: PBS with 0.05% proclin300, 50% glycerol, pH7.3.

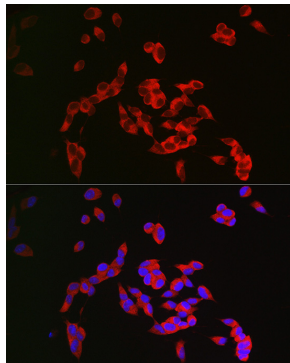
Validation Data



Western blot analysis of extracts of Rat brain, using CRMP1 antibody (A2705) at 1:1000 dilution.
Secondary antibody: HRP Goat Anti-Rabbit IgG (H+L) (AS014) at 1:10000 dilution.
Lysates/proteins: 25µg per lane.
Blocking buffer: 3% nonfat dry milk in TBST.
Detection: ECL Basic Kit (RM00020).
Exposure time: 5s.



Immunofluorescence analysis of Neuro-2a cells using CRMP1 Rabbit pAb (A2705) at dilution of 1:300 (40x lens). Blue: DAPI for nuclear staining.



Immunofluorescence analysis of SH-SY5Y cells using CRMP1 Rabbit pAb (A2705) at dilution of 1:300 (40x lens). Blue: DAPI for nuclear staining.