

# cGAS Mouse mAb

Catalog No.: A27100

## Basic Information

### Observed MW

63kDa

### Calculated MW

59kDa

### Category

Primary antibody

### Applications

WB,IHC-P,ELISA

### Cross-Reactivity

Human, Mouse

### CloneNo number

AMC0693

## Background

Enables several functions, including 2',3'-cyclic GMP-AMP synthase activity; chromatin binding activity; and phosphatidylinositol-4,5-bisphosphate binding activity. Involved in several processes, including cellular response to exogenous dsRNA; positive regulation of intracellular signal transduction; and regulation of defense response. Located in several cellular components, including cytosol; nucleus; and site of double-strand break.

## Recommended Dilutions

**WB** 1:1000 - 1:4000

**IHC-P** 1:100 - 1:500

**ELISA** Recommended starting concentration is 1 µg/mL. Please optimize the concentration based on your specific assay requirements.

## Immunogen Information

### Gene ID

115004

### Swiss Prot

Q8N884

### Immunogen

A synthetic peptide corresponding to a sequence within amino acids 1-100 of human cGAS (Q8N884).

### Synonyms

MB21D1; h-cGAS; C6orf150

## Contact

☎ | 400-999-6126

✉ | [cn.market@abclonal.com.cn](mailto:cn.market@abclonal.com.cn)

🌐 | [www.abclonal.com.cn](http://www.abclonal.com.cn)

## Product Information

### Source

Mouse

### Isotype

IgG2a κ

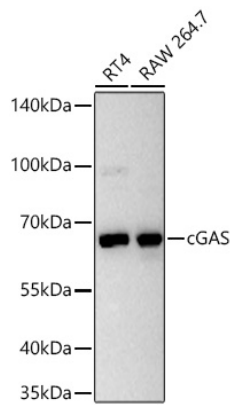
### Purification

Affinity purification

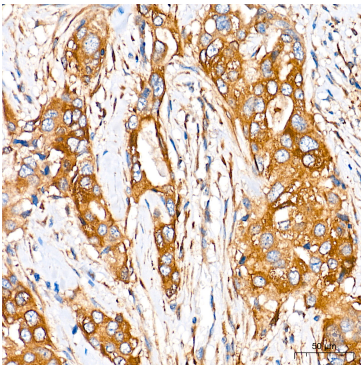
### Storage

Store at 4°C. Avoid freeze / thaw cycles.  
Buffer: PBS with 0.1% Sodium azide,pH7.3.

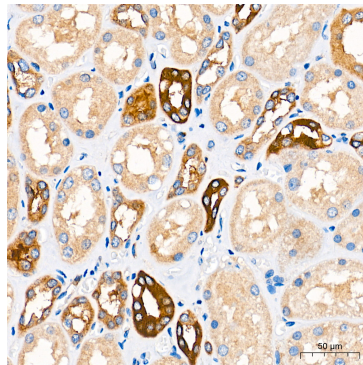
## Validation Data



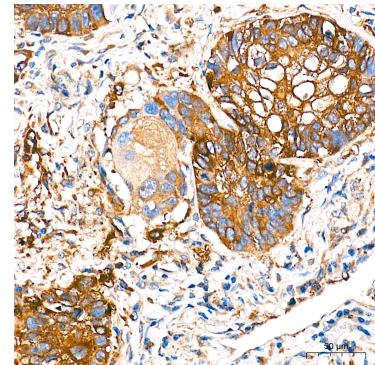
Western blot analysis of various lysates using cGAS Mouse mAb (A27100) at 1:1000 dilution incubated overnight at 4°C.  
Secondary antibody: HRP-conjugated Goat anti-Mouse IgG (H+L) (AS003) at 1:10000 dilution.  
Lysates/proteins: 25 µg per lane.  
Blocking buffer: 3% nonfat dry milk in TBST.  
Detection: ECL Basic Kit (RM00020).  
Exposure time: 20s.



Immunohistochemistry analysis of paraffin-embedded Human breast cancer tissue using cGAS Mouse mAb (A27100) at a dilution of 1:200 (40x lens). High pressure antigen retrieval performed with 0.01M Tris-EDTA Buffer (pH 9.0) prior to IHC staining.



Immunohistochemistry analysis of paraffin-embedded Human kidney tissue using cGAS Mouse mAb (A27100) at a dilution of 1:200 (40x lens). High pressure antigen retrieval performed with 0.01M Tris-EDTA Buffer (pH 9.0) prior to IHC staining.



Immunohistochemistry analysis of paraffin-embedded Human lung squamous carcinoma tissue using cGAS Mouse mAb (A27100) at a dilution of 1:200 (40x lens). High pressure antigen retrieval performed with 0.01M Tris-EDTA Buffer (pH 9.0) prior to IHC staining.