

# ABflo® 647 Rabbit anti-Monkey IgG2 (Fc) mAb

Catalog No.: A27105

## Basic Information

---

**Observed MW**

**Calculated MW**

**Category**

Primary antibody

**Applications**

FC

**Cross-Reactivity**

Monkey

**CloneNo number**

ARC71295-ABflo647

**Conjugate**

ABflo® 647. Ex:648nm. Em:664nm.

## Background

---

## Recommended Dilutions

---

**FC** 5 µl per 10<sup>6</sup> cells in  
100 µl volume

## Immunogen Information

---

**Gene ID**

/

**Swiss Prot**

**Immunogen**

Recombinant fusion protein containing a sequence corresponding to amino acids 98-325 of monkey IgG2 (QJB76126.1).

**Synonyms**

## Contact

---

☎ | 400-999-6126

✉ | [cn.market@abclonal.com.cn](mailto:cn.market@abclonal.com.cn)

🌐 | [www.abclonal.com.cn](http://www.abclonal.com.cn)

## Product Information

---

**Source**

Rabbit

**Isotype**

IgG

**Purification**

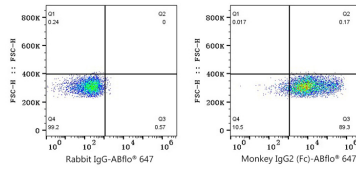
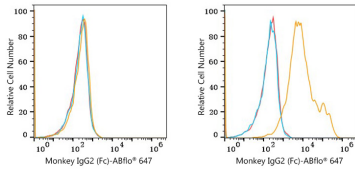
Affinity purification

**Storage**

Store at 2-8°C. Avoid freeze.

Buffer: PBS with 0.09% Sodium azide, 0.2% BSA, pH7.3.

## Validation Data



Flow cytometry:  $1 \times 10^6$  293T cells (negative control, left) and 293T (Transfection, right) cells were surface-stained with ABflo® 647 Rabbit anti-Monkey IgG2 (Fc) mAb (A27105, 5  $\mu$ l/Test, orange line) or ABflo® 647 Rabbit IgG isotype control (A22070, 5  $\mu$ l/Test, blue line). Non-fluorescently stained cells were used as blank control (red line).

Flow cytometry:  $1 \times 10^6$  293T (Transfection) cells were surface-stained with ABflo® 647 Rabbit IgG isotype control (A22070, 5  $\mu$ l/Test, left) or ABflo® 647 Rabbit anti-Monkey IgG2 (Fc) mAb (A27105, 5  $\mu$ l/Test, right).