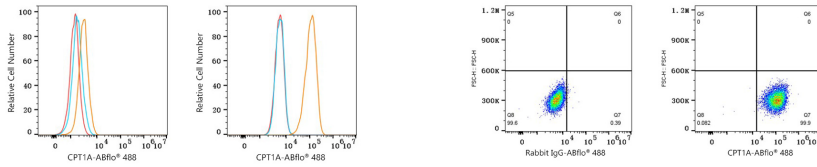


Validation Data



Flow cytometry: 1×10^6 Daudi cells (negative control, left) and SK-OV-3 cells (right) were intracellularly-stained with ABflo® 488 Rabbit anti-Human CPT1A mAb (A27107, 5 μ l/Test, orange line) or ABflo® 488 Rabbit IgG isotype control (A22069, 5 μ l/Test, blue line). Non-fluorescently stained cells were used as blank control (red line).

Flow cytometry: SK-OV-3 cells were intracellularly-stained with ABflo® 488 Rabbit IgG isotype control (A22069, 5 μ l/Test, left) or ABflo® 488 Rabbit anti-Human CPT1A mAb (A27107, 5 μ l/Test, right).