

# [KO Validated] N-terminal alpha-synuclein mAb [MJFF-B-3A4]

Catalog No.: A27117 **KO** Validated

## Basic Information

### Observed MW

18kDa/

### Calculated MW

14kDa

### Category

Primary antibody

### Applications

WB,IF/ICC,ELISA

### Cross-Reactivity

Human, Mouse, Rat

### CloneNo number

ARC5166

## Background

Alpha-synuclein is a member of the synuclein family, which also includes beta- and gamma-synuclein. Alpha-synuclein is a neuronal protein that plays many roles in synaptic activity such as membrane trafficking of synaptic vesicles and neurotransmitter release. Multiplications in SNCA have been implicated in genetic forms of Parkinson disease and pathological post-translational modifications of alpha-synuclein are a hallmark of Parkinson's disease. These modifications include phosphorylation, nitration, acetylation, truncation, and aggregation.

## Recommended Dilutions

**WB** 1:5000 - 1:30000

**IF/ICC** 1:200 - 1:500

**ELISA** Recommended starting concentration is 1 µg/mL. Please optimize the concentration based on your specific assay requirements.

## Immunogen Information

### Gene ID

6622

### Swiss Prot

P37840

### Immunogen

Synthetic peptide. This information is considered to be commercially sensitive.

### Synonyms

NACP; PARK1; α-Synuclein; SNCA

## Contact

☎ | 400-999-6126

✉ | [cn.market@abclonal.com.cn](mailto:cn.market@abclonal.com.cn)

🌐 | [www.abclonal.com.cn](http://www.abclonal.com.cn)

## Product Information

### Source

Rabbit

### Isotype

IgG

### Purification

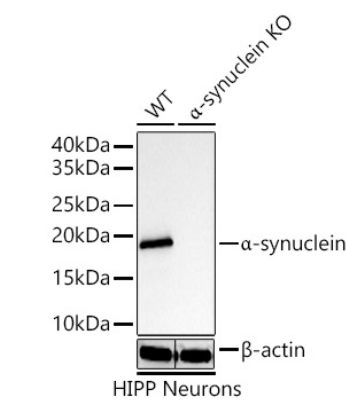
Affinity purification

### Storage

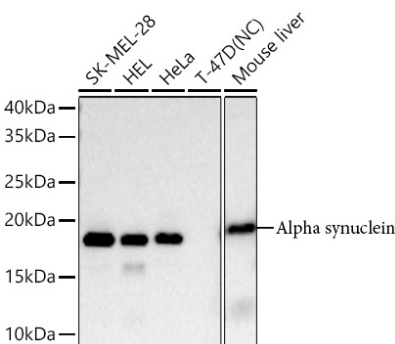
Store at -20°C. Avoid freeze / thaw cycles.

Buffer: PBS with 0.09% Sodium azide, 0.05% BSA, 50% glycerol, pH7.3.

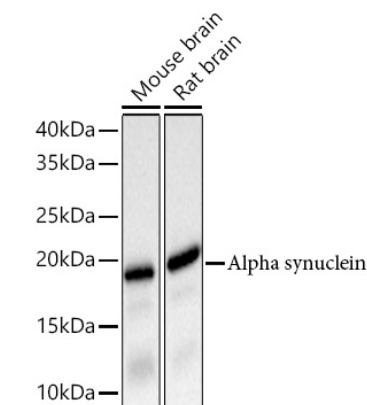
Validation Data



Western blot analysis of lysates from wild type (WT) and N-terminal alpha-synuclein knockout (KO) HIPP Neurons cells using [KO Validated] N-terminal alpha-synuclein mAb [MJFF-B-3A4] (A27117) at 1:5000 dilution .  
Secondary antibody: HRP-conjugated Goat anti-Rabbit IgG (H+L) (AS014) at 1:10000 dilution.  
Lysates/proteins: 25 µg per lane.  
Blocking buffer: 3% nonfat dry milk in TBST.  
Detection: ECL Basic Kit (RM00020).  
Exposure time: 10s.



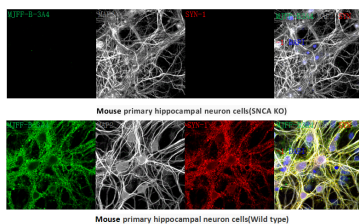
Western blot analysis of various lysates using [KO Validated] N-terminal alpha-synuclein mAb [MJFF-B-3A4] (A27117) at 1:5000 dilution .  
Secondary antibody: HRP-conjugated Goat anti-Rabbit IgG (H+L) (AS014) at 1:10000 dilution.  
Lysates/proteins: 25 µg per lane.  
Blocking buffer: 3% nonfat dry milk in TBST.  
Detection: ECL Basic Kit (RM00020).  
Negative control (NC): T-47D  
Exposure time: 60s.



Western blot analysis of various lysates using [KO Validated] N-terminal alpha-synuclein mAb [MJFF-B-3A4] (A27117) at 1:5000 dilution .  
Secondary antibody: HRP-conjugated Goat anti-Rabbit IgG (H+L) (AS014) at 1:10000 dilution.  
Lysates/proteins: 25 µg per lane.  
Blocking buffer: 3% nonfat dry milk in TBST.  
Detection: ECL Basic Kit (RM00020).  
Exposure time: 3s.

## Validation Data

---



Confocal imaging of Mouse primary hippocampal neuron cells(Wild type) and Mouse primary hippocampal neuron cells(SNCA KO) using N-terminal alpha-synuclein mAb [MJFF-B-3A4] (A27117, dilution 1:500) followed by a further incubation with AF488 conjugated donkey Anti-Rabbit (H+L) (A-21206, dilution 1:500) (Green). The cells were counterstained with total aSyn antibody and MAP2 antibody followed by incubation with AF647 conjugated Donkey Anti-mouse IgG (H+L) Ab (A-31571) (Red) and AF568 conjugated Donkey Anti-chicken IgG (H+L) Ab (703-545-155, dilution 1:400) (Grey).DAPI was used for nuclear staining (Blue). Objective: 40x.