

PE Rabbit anti-Human CD156c/ADAM10 mAb

Catalog No.: A27128

Basic Information

Observed MW

Calculated MW

84kDa

Category

Primary antibody

Applications

FC

Cross-Reactivity

Human

CloneNo number

ARC71385

Conjugate

PE. Ex:565nm. Em:574nm.

Background

Members of the ADAM family are cell surface proteins with a unique structure possessing both potential adhesion and protease domains. This gene encodes an ADAM family member that cleaves many proteins including TNF-alpha and E-cadherin. Alternate splicing results in multiple transcript variants encoding different proteins that may undergo similar processing.

Recommended Dilutions

FC 5 µl per 10⁶ cells in
100 µl volume

Immunogen Information

Gene ID

102

Swiss Prot

O14672

Immunogen

Recombinant protein (or fragment). This information is considered to be commercially sensitive.

Synonyms

RAK; kuz; AD10; AD18; MADM; CD156c; CDw156; HsT18717

Contact

 | 400-999-6126

 | cn.market@abclonal.com.cn

 | www.abclonal.com.cn

Product Information

Source

Rabbit

Isotype

IgG

Purification

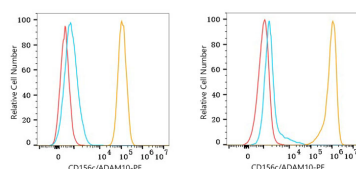
Affinity purification

Storage

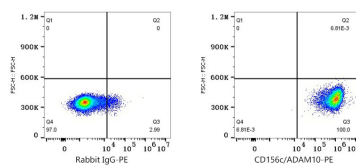
Store at 2-8°C. Avoid freeze.

Buffer: PBS with 0.09% Sodium azide, 0.2% BSA, pH7.3.

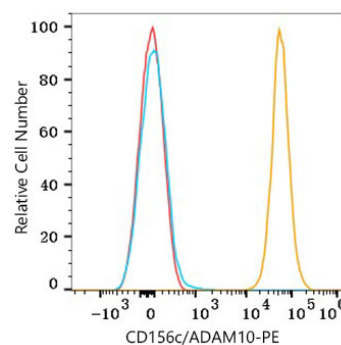
Validation Data



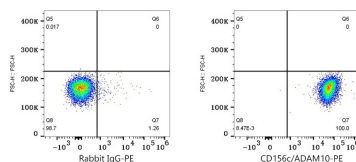
Flow cytometry: 1×10^6 SH-SY5Y cells (Low Expression, left) and A431 cells (right) were surface-stained with PE Rabbit anti-Human CD156c/ADAM10 mAb (A27128, 5 μ l/Test, orange line) or PE Rabbit IgG isotype control (A24172, 5 μ l/Test, blue line). Non-fluorescently stained cells were used as blank control (red line).



Flow cytometry: 1×10^6 A431 cells were surface-stained with PE Rabbit IgG isotype control (A24172, 5 μ l/Test, left) or PE Rabbit anti-Human CD156c/ADAM10 mAb (A27128, 5 μ l/Test, right).



Flow cytometry: 1×10^6 Human PBMC were surface-stained with PE Rabbit anti-Human CD156c/ADAM10 mAb (A27128, 5 μ l/Test, orange line) or PE Rabbit IgG isotype control (A24172, 5 μ l/Test, blue line). Non-fluorescently stained cells were used as blank control (red line). Cells in the gate were used for analysis.



Flow cytometry: 1×10^6 Human PBMC were surface-stained with PE Rabbit IgG isotype control (A24172, 5 μ l/Test, left) or PE Rabbit anti-Human CD156c/ADAM10 mAb (A27128, 5 μ l/Test, right).