

# APC Rabbit anti-Human CD156c/ADAM10 mAb

Catalog No.: A27129

## Basic Information

### Observed MW

### Calculated MW

84kDa

### Category

Primary antibody

### Applications

FC

### Cross-Reactivity

Human

### CloneNo number

ARC71385-APC

### Conjugate

APC. Ex:650nm. Em:660nm.

## Background

Members of the ADAM family are cell surface proteins with a unique structure possessing both potential adhesion and protease domains. This gene encodes an ADAM family member that cleaves many proteins including TNF-alpha and E-cadherin. Alternate splicing results in multiple transcript variants encoding different proteins that may undergo similar processing.

## Recommended Dilutions

FC 5  $\mu$ l per  $10^6$  cells in  
100  $\mu$ l volume

## Immunogen Information

### Gene ID

102

### Swiss Prot

O14672

### Immunogen

Recombinant Protein corresponding to a sequence within amino acids 214-672 of human ADAM10 (NP\_001101.1).

### Synonyms

RAK; kuz; AD10; AD18; MADM; CD156c; CDw156; HsT18717

## Contact

☎ | 400-999-6126

✉ | [cn.market@abclonal.com.cn](mailto:cn.market@abclonal.com.cn)

🌐 | [www.abclonal.com.cn](http://www.abclonal.com.cn)

## Product Information

### Source

Rabbit

### Isotype

IgG

### Purification

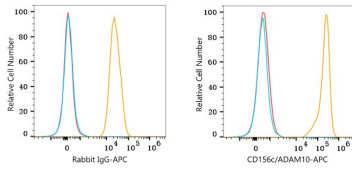
Affinity purification

### Storage

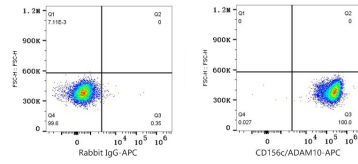
Store at 2-8°C. Avoid freeze.

Buffer: PBS with 0.09% Sodium azide, 0.2% BSA, pH7.3.

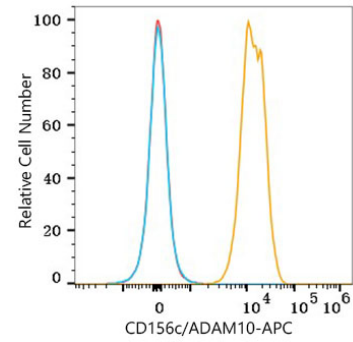
## Validation Data



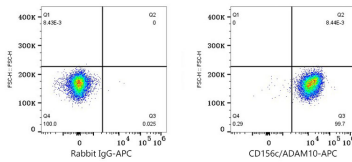
Flow cytometry:  $1 \times 10^6$  SH-SY5Y cells (Low Expression, left) and A431 cells (right) were surface-stained with APC Rabbit anti-Human CD156c/ADAM10 mAb (A27129,5  $\mu\text{l}/\text{Test}$ , orange line) or APC Rabbit IgG isotype control (A24173,5  $\mu\text{l}/\text{Test}$ , blue line). Non-fluorescently stained cells were used as blank control (red line).



Flow cytometry:  $1 \times 10^6$  A431 cells were surface-stained with APC Rabbit IgG isotype control (A24173,5  $\mu\text{l}/\text{Test}$ , left) or APC Rabbit anti-Human CD156c/ADAM10 mAb (A27129,5  $\mu\text{l}/\text{Test}$ , right).



Flow cytometry:  $1 \times 10^6$  Human PBMC cells were surface-stained with APC Rabbit anti-Human CD156c/ADAM10 mAb (A27129,5  $\mu\text{l}/\text{Test}$ , orange line) or APC Rabbit IgG isotype control (A24173,5  $\mu\text{l}/\text{Test}$ , blue line). Non-fluorescently stained cells were used as blank control (red line). Cells in the gate were used for analysis.



Flow cytometry:  $1 \times 10^6$  Human PBMC cells were surface-stained with APC Rabbit IgG isotype control (A24173,5  $\mu\text{l}/\text{Test}$ , left) or APC Rabbit anti-Human CD156c/ADAM10 mAb (A27129,5  $\mu\text{l}/\text{Test}$ , right).