

# APC Rabbit anti-Human mGluR2 mAb

Catalog No.: A27131

## Basic Information

### Observed MW

### Calculated MW

96kDa

### Category

Primary antibody

### Applications

FC

### Cross-Reactivity

Human

### CloneNo number

ARC70955-APC

### Conjugate

APC. Ex:650nm. Em:660nm.

## Recommended Dilutions

FC 5  $\mu$ l per  $10^6$  cells in  
100  $\mu$ l volume

## Background

L-glutamate is the major excitatory neurotransmitter in the central nervous system and activates both ionotropic and metabotropic glutamate receptors. Glutamatergic neurotransmission is involved in most aspects of normal brain function and can be perturbed in many neuropathologic conditions. The metabotropic glutamate receptors are a family of G protein-coupled receptors, that have been divided into 3 groups on the basis of sequence homology, putative signal transduction mechanisms, and pharmacologic properties. Group I includes GRM1 and GRM5 and these receptors have been shown to activate phospholipase C. Group II includes GRM2 and GRM3 while Group III includes GRM4, GRM6, GRM7 and GRM8. Group II and III receptors are linked to the inhibition of the cyclic AMP cascade but differ in their agonist selectivities. Several transcript variants encoding different isoforms have been found for this gene.

## Immunogen Information

### Gene ID

2912

### Swiss Prot

Q14416

### Immunogen

Recombinant fusion protein containing a sequence corresponding to amino acids 22-498 of human mGluR2 (NP\_000830.2).

### Synonyms

GLUR2; mGlu2; GPRC1B; MGLUR2

## Contact

☎ | 400-999-6126

✉ | [cn.market@abclonal.com.cn](mailto:cn.market@abclonal.com.cn)

🌐 | [www.abclonal.com.cn](http://www.abclonal.com.cn)

## Product Information

### Source

Rabbit

### Isotype

IgG

### Purification

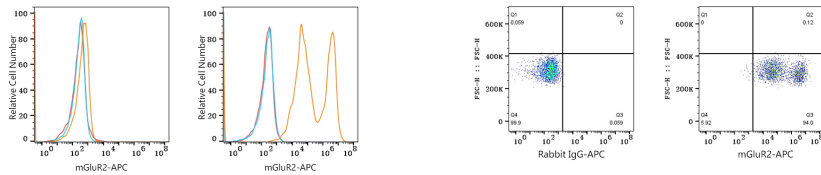
Affinity purification

### Storage

Store at 2-8°C. Avoid freeze.

Buffer: PBS with 0.09% Sodium azide, 0.2% BSA, pH7.3.

## Validation Data



Flow cytometry:  $1 \times 10^6$  293T cells (negative control, left) and 293T (Transfection, right) cells were surface-stained with APC Rabbit anti-Human mGluR2 mAb (A27131, 5  $\mu$ l/Test, orange line) or APC Rabbit IgG isotype control (A24173, 5  $\mu$ l/Test, blue line). Non-fluorescently stained cells were used as blank control (red line).

Flow cytometry:  $1 \times 10^6$  293T (Transfection) cells were surface-stained with APC Rabbit IgG isotype control (A24173, 5  $\mu$ l/Test, left) or APC Rabbit anti-Human mGluR2 mAb (A27131, 5  $\mu$ l/Test, right).