

PE Rabbit anti-Mouse CD103 mAb

Catalog No.: A27132

Basic Information

Observed MW

Calculated MW
129kDa

Category
Primary antibody

Applications
FC

Cross-Reactivity
Mouse

CloneNo number
ARC69162-PE

Conjugate
PE. Ex:565nm. Em:574nm.

Recommended Dilutions

FC 5 μ l per 10^6 cells in
100 μ l volume

Background

Predicted to enable metal ion binding activity. Predicted to act upstream of or within cell adhesion and integrin-mediated signaling pathway. Located in external side of plasma membrane. Is expressed in several structures, including alimentary system; genitourinary system; lymph node; nasal septum; and nucleus pulposus. Orthologous to human ITGAE (integrin subunit alpha E).

Immunogen Information

Gene ID	Swiss Prot
16407	Q60677

Immunogen

Recombinant fusion protein containing a sequence corresponding to amino acids 191-385 of mouse CD103 (NP_032425.2).

Synonyms

CD103; aM290; alpha-E1; A530055J10; alpha-M290

Contact

☎ | 400-999-6126

✉ | cn.market@abclonal.com.cn

🌐 | www.abclonal.com.cn

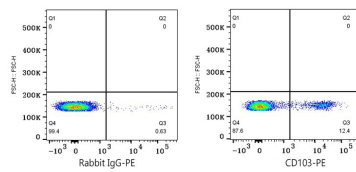
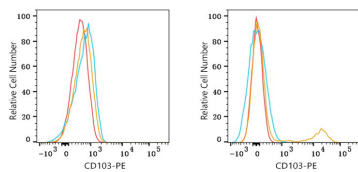
Product Information

Source	Isotype	Purification
Rabbit	IgG	Affinity purification

Storage

Store at 2-8°C. Avoid freeze.
Buffer: PBS with 0.09% Sodium azide, 0.2% BSA, pH7.3.

Validation Data



Flow cytometry: 1×10^6 NIH/3T3 cells (negative control, left) and C57BL/6 mouse splenocytes cells (right) were surface-stained with PE Rabbit anti-Mouse CD103 mAb (A27132, 5 μ l/Test, orange line) or PE Rabbit IgG isotype control (A24172, 5 μ l/Test, blue line). Non-fluorescently stained cells were used as blank control (red line).

Flow cytometry: 1×10^6 C57BL/6 mouse splenocytes cells were surface-stained with PE Rabbit IgG isotype control (A24172, 5 μ l/Test, left) or PE Rabbit anti-Mouse CD103 mAb (A27132, 5 μ l/Test, right).