

PE Rabbit anti-Human IFN-gamma mAb

Catalog No.: A27139

Basic Information

Observed MW

Calculated MW

19kDa

Category

Primary antibody

Applications

FC (intra)

Cross-Reactivity

Human

CloneNo number

ARC67550-PE

Conjugate

PE. Ex:565nm. Em:574nm.

Recommended Dilutions

FC (intra) 5 µl per 10⁶ cells in
 100 µl volume

Background

This gene encodes a soluble cytokine that is a member of the type II interferon class. The encoded protein is secreted by cells of both the innate and adaptive immune systems. The active protein is a homodimer that binds to the interferon gamma receptor which triggers a cellular response to viral and microbial infections. Mutations in this gene are associated with an increased susceptibility to viral, bacterial and parasitic infections and to several autoimmune diseases.

Immunogen Information

Gene ID

3458

Swiss Prot

P01579

Immunogen

Recombinant fusion protein containing a sequence corresponding to amino acids 24-166 of human IFN-gamma (NP_000610.2).

Synonyms

IFG; IFI; IMD69

Contact

 | 400-999-6126

 | cn.market@abclonal.com.cn

 | www.abclonal.com.cn

Product Information

Source

Rabbit

Isotype

IgG

Purification

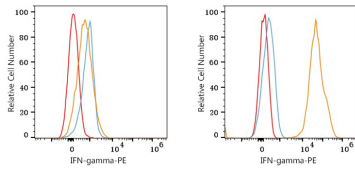
Affinity purification

Storage

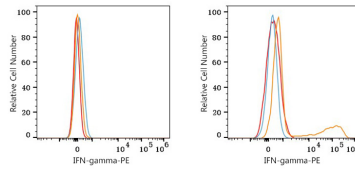
Store at 2-8°C. Avoid freeze.

Buffer: PBS with 0.09% Sodium azide, 0.2% BSA, pH7.3.

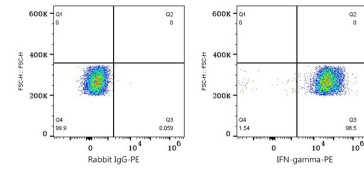
Validation Data



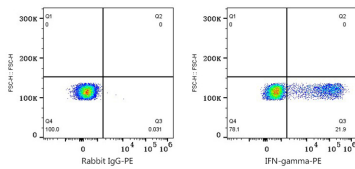
Flow cytometry: 1×10^6 293T cells (negative control, left) and 293T (Transfection, right) cells were intracellularly-stained with PE Rabbit anti-Human IFN-gamma mAb (A27139, 5 μ l/Test, orange line) or PE Rabbit IgG isotype control (A24172, 5 μ l/Test, blue line). Non-fluorescently stained cells were used as blank control (red line).



Flow cytometry: 1×10^6 Human PBMC (negative control, left) and Human PBMC (treated with 50ng/mL PMA and 1ug/mL ionomycin for 4-6 hours, right) were intracellularly-stained with PE Rabbit anti-Human IFN-gamma mAb (A27139, 2 μ l/Test, orange line) or PE Rabbit IgG isotype control (A24172, 2 μ l/Test, blue line). Non-fluorescently stained cells were used as blank control (red line). Cells in the Lymphocytes gate were used for analysis.



Flow cytometry: 1×10^6 293T (Transfection) cells were intracellularly-stained with PE Rabbit IgG isotype control (A24172, 5 μ l/Test, left) or PE Rabbit anti-Human IFN-gamma mAb (A27139, 5 μ l/Test, right).



Flow cytometry: 1×10^6 Human PBMC (treated with 50ng/mL PMA and 1ug/mL ionomycin for 4-6 hours) were intracellularly-stained with PE Rabbit IgG isotype control (A24172, 5 μ l/Test, left) or PE Rabbit anti-Human IFN-gamma mAb (A27139, 5 μ l/Test, right). Cells in the Lymphocytes gate were used for analysis.