

# ABflo® 610 Rabbit anti-Human CD335/NKp46 mAb

Catalog No.: A27141

## Basic Information

### Observed MW

### Calculated MW

21kDa/22kDa/23kDa/32kDa/34kDa

### Category

Primary antibody

### Applications

FC

### Cross-Reactivity

Human

### CloneNo number

ARC62449-ABflo610

### Conjugate

ABflo® 610. Ex:421nm. Em:612nm.

## Recommended Dilutions

FC 5 µl per 10<sup>6</sup> cells in  
100 µl volume

## Background

Predicted to be involved in cellular defense response; regulation of natural killer cell mediated cytotoxicity; and signal transduction. Predicted to act upstream of or within defense response to virus and detection of virus. Predicted to be located in cell surface. Predicted to be part of SWI/SNF complex. Predicted to be active in plasma membrane. Biomarker of acquired immunodeficiency syndrome; anogenital venereal wart; hepatitis C; and lymphoproliferative syndrome.

## Immunogen Information

### Gene ID

9437

### Swiss Prot

O76036

### Immunogen

Recombinant fusion protein containing a sequence corresponding to amino acids 22-254 of human CD335/NKp46 (NP\_004820.2).

### Synonyms

LY94; CD335; NKP46; NK-p46

## Contact

 | 400-999-6126

 | [cn.market@abclonal.com.cn](mailto:cn.market@abclonal.com.cn)

 | [www.abclonal.com.cn](http://www.abclonal.com.cn)

## Product Information

### Source

Rabbit

### Isotype

IgG

### Purification

Affinity purification

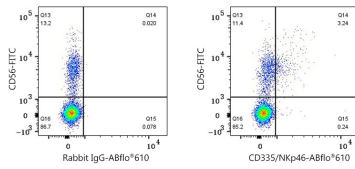
### Storage

Store at 2-8°C. Avoid freeze.

Buffer: PBS with 0.09% Sodium azide,0.2% BSA,pH7.3.

## Validation Data

---



Flow cytometry:  $1 \times 10^6$  Human PBMC were surface-stained with FITC Rabbit anti-Human CD56 mAb (5  $\mu$ l/Test) and ABflo® 610 Rabbit IgG isotype control (A25826, 5  $\mu$ l/Test, left) or ABflo® 610 Rabbit anti-Human CD335/NKp46 mAb (A27141, 5  $\mu$ l/Test, right). Cells in the lymphocyte gate were used for analysis.