

PE Rat anti-Mouse Ly-6G mAb

Catalog No.: A27159

Basic Information

Observed MW

Calculated MW

14kDa

Category

Primary antibody

Applications

FC

Cross-Reactivity

Mouse

CloneNo number

ATC0030

Conjugate

PE. Ex:565nm. Em:574nm.

Background

Located in external side of plasma membrane.

Recommended Dilutions

FC 5 μ l per 10^6 cells in
100 μ l volume

Immunogen Information

Gene ID

546644

Swiss Prot

P35461

Immunogen

Synthetic peptide. This information is considered to be commercially sensitive.

Synonyms

Gr1; Gr-1; Ly-6G□Ly-6G.1

Contact

 | 400-999-6126

 | cn.market@abclonal.com.cn

 | www.abclonal.com.cn

Product Information

Source

Rat

Isotype

Rat / IgG2a, kappa

Purification

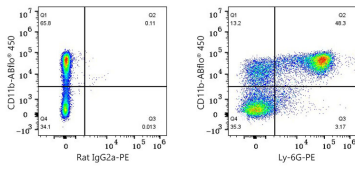
Affinity purification

Storage

Store at 2-8°C. Avoid freeze.

Buffer: PBS with 0.09% Sodium azide,0.2% BSA,pH7.3.

Validation Data



Flow cytometry: 1×10^6 C57BL/6 mouse bone marrow cells were surface-stained with ABflo® 450 Rabbit anti-Mouse CD11b mAb (A26229, 5 μ l/Test) and PE Rat IgG2a isotype control (5 μ l/Test, left) or PE Rat anti-Mouse Ly-6G mAb (A27159, 5 μ l/Test, right).