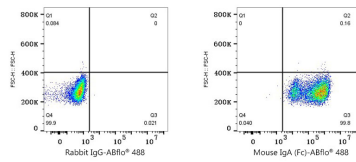
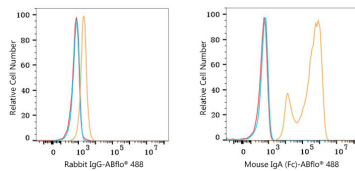


Validation Data



Flow cytometry: 1X10⁶ 293T cells (negative control, left) and 293T (Transfection, right) cells were intracellularly-stained with ABflo® 488 Rabbit anti-Mouse IgA (Fc) mAb (A27163, 5 µl/Test, orange line) or ABflo® 488 Rabbit IgG isotype control (A22069, 5 µl/Test, blue line). Non-fluorescently stained cells were used as blank control (red line).

Flow cytometry: 1X10⁶ 293T (Transfection) cells were intracellularly-stained with ABflo® 488 Rabbit IgG isotype control (A22069, 5 µl/Test, left) or ABflo® 488 Rabbit anti-Mouse IgA (Fc) mAb (A27163, 5 µl/Test, right).