

ABflo® 488 Rabbit anti-Mouse CD40 mAb

Catalog No.: A27175

Basic Information

Observed MW

Calculated MW

32kDa

Category

Primary antibody

Applications

FC

Cross-Reactivity

Mouse

CloneNo number

ARC71300-ABflo488

Conjugate

ABflo® 488. Ex:491nm. Em:516nm.

Recommended Dilutions

FC 5 µl per 10⁶ cells in
100 µl volume

Background

Predicted to enable antigen binding activity; protein domain specific binding activity; and ubiquitin protein ligase binding activity. Involved in B cell mediated immunity; CD40 signaling pathway; and cellular calcium ion homeostasis. Acts upstream of or within several processes, including defense response to other organism; positive regulation of B cell activation; and positive regulation of interleukin-12 production. Located in external side of plasma membrane and intracellular membrane-bounded organelle. Part of CD40 receptor complex. Is expressed in several structures, including alimentary system; brain; hemolymphoid system gland; liver and biliary system; and reproductive system. Human ortholog(s) of this gene implicated in several diseases, including Kawasaki disease; autoimmune disease (multiple); end stage renal disease; hyperimmunoglobulin syndrome (multiple); and non-Hodgkin lymphoma (multiple). Orthologous to human CD40 (CD40 molecule).

Immunogen Information

Gene ID

21939

Swiss Prot

P27512

Immunogen

Recombinant fusion protein containing a sequence corresponding to amino acids 20-189 of mouse CD40 (NP_035741.2).

Synonyms

IGM; p50; Bp50; GP39; IMD3; TRAP; HIGM1; T-BAM; Tnfrsf5

Contact

☎ | 400-999-6126

✉ | cn.market@abclonal.com.cn

🌐 | www.abclonal.com.cn

Product Information

Source

Rabbit

Isotype

IgG

Purification

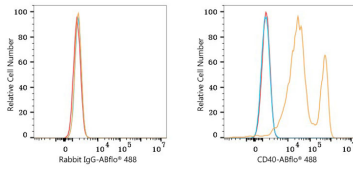
Affinity purification

Storage

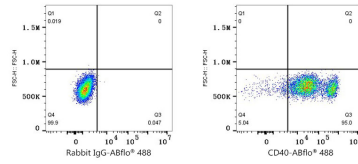
Store at 2-8°C. Avoid freeze.

Buffer: PBS with 0.09% Sodium azide, 0.2% BSA, pH7.3.

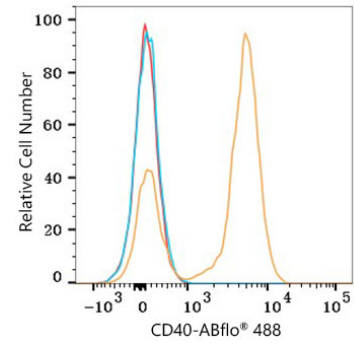
Validation Data



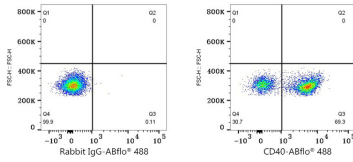
Flow cytometry: 1×10^6 293T cells (negative control, left) and 293T (Transfection, right) cells were surface-stained with ABflo® 488 Rabbit anti-Mouse CD40 mAb (A27175, 5 μ l/Test, orange line) or ABflo® 488 Rabbit IgG isotype control (A22069, 5 μ l/Test, blue line). Non-fluorescently stained cells were used as blank control (red line).



Flow cytometry: 1×10^6 293T (Transfection) cells were surface-stained with ABflo® 488 Rabbit IgG isotype control (A22069, 5 μ l/Test, left) or ABflo® 488 Rabbit anti-Mouse CD40 mAb (A27175, 5 μ l/Test, right).



Flow cytometry: 1×10^6 C57BL/6 Splenocytes were surface-stained with ABflo® 488 Rabbit anti-Mouse CD40 mAb (A27175, 5 μ l/Test, orange line) or ABflo® 488 Rabbit IgG isotype control (A22069, 5 μ l/Test, blue line). Non-fluorescently stained cells were used as blank control (red line). Cells in the gate were used for analysis.



Flow cytometry: 1×10^6 C57BL/6 Splenocytes were surface-stained with ABflo® 488 Rabbit IgG isotype control (A22069, 5 μ l/Test, left) or ABflo® 488 Rabbit anti-Mouse CD40 mAb (A27175, 5 μ l/Test, right).