

# ABflo® 647 Rabbit anti-Mouse CD265/RANK mAb

Catalog No.: A27179

## Basic Information

### Observed MW

### Calculated MW

67kDa

### Category

Primary antibody

### Applications

FC

### Cross-Reactivity

Mouse

### CloneNo number

ARC65571

### Conjugate

ABflo® 647. Ex:648nm. Em:664nm.

## Recommended Dilutions

FC 5 µl per 10<sup>6</sup> cells in  
100 µl volume

## Background

Enables tumor necrosis factor-activated receptor activity. Involved in several processes, including circadian temperature homeostasis; positive regulation of fever generation by positive regulation of prostaglandin secretion; and tumor necrosis factor-mediated signaling pathway. Acts upstream of or within several processes, including hematopoietic or lymphoid organ development; mammary gland alveolus development; and positive regulation of bone resorption. Located in cell surface. Is expressed in bladder and lymphatic system. Human ortholog(s) of this gene implicated in Paget's disease of bone; autosomal recessive osteopetrosis 7; bone development disease; familial expansile osteolysis; and osteoporosis. Orthologous to human TNFRSF11A (TNF receptor superfamily member 11a).

## Immunogen Information

### Gene ID

21934

### Swiss Prot

O35305

### Immunogen

Recombinant protein (or fragment). This information is considered to be commercially sensitive.

### Synonyms

OFE; ODFR; Rank; Ly109; mRANK; TRANCE-R

## Contact

☎ | 400-999-6126

✉ | [cn.market@abclonal.com.cn](mailto:cn.market@abclonal.com.cn)

🌐 | [www.abclonal.com.cn](http://www.abclonal.com.cn)

## Product Information

### Source

Rabbit

### Isotype

IgG

### Purification

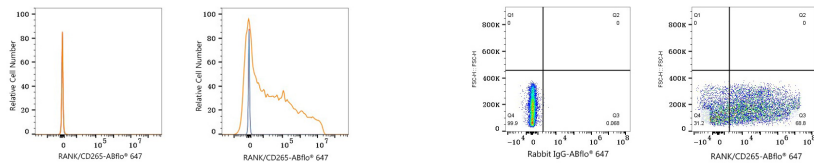
Affinity purification

### Storage

Store at 2-8°C. Avoid freeze.

Buffer: PBS containing 0.2% BSA, preserved with proclin300 or sodium azide (as specified on the Certificate of Analysis), pH 7.3.

## Validation Data



Flow cytometry:  $1 \times 10^6$  293T cells (negative control, left) and 293T cells (Transfection, right) were surface-stained with ABflo® 647 Rabbit anti-Mouse RANK/CD265 mAb (A27179, 5  $\mu$ l/Test, orange line) or ABflo® 647 Rabbit IgG isotype control (A22070, 5  $\mu$ l/Test, blue line). Non-fluorescently stained cells were used as blank control (red line).

Flow cytometry:  $1 \times 10^6$  293T (Transfection) cells were surface-stained with ABflo® 647 Rabbit IgG isotype control (A22070, 5  $\mu$ l/Test, left) or ABflo® 647 Rabbit anti-Mouse RANK/CD265 mAb (A27179, 5  $\mu$ l/Test, right).