

ABflo® 488 Rabbit anti-Mouse H2-Ab1 mAb

Catalog No.: A27182

Basic Information

Observed MW

Calculated MW

30kDa

Category

Primary antibody

Applications

FC

Cross-Reactivity

Mouse

CloneNo number

ARC71894-ABflo488

Conjugate

ABflo® 488. Ex:491nm. Em:516nm.

Recommended Dilutions

FC 5 µl per 10⁶ cells in
100 µl volume

Background

Enables several functions, including peptide antigen binding activity; protein antigen binding activity; and toxic substance binding activity. Involved in several processes, including B cell affinity maturation; cellular response to interferon-gamma; and positive regulation of T-helper 1 type immune response. Acts upstream of or within antigen processing and presentation of exogenous peptide antigen via MHC class II and immune response. Located in Golgi apparatus; endosome; and external side of plasma membrane. Is integral component of membrane. Part of MHC class II protein complex. Is expressed in lung; metanephros; and thymus primordium. Orthologous to human HLA-DQB2 (major histocompatibility complex, class II, DQ beta 2).

Immunogen Information

Gene ID

14961

Swiss Prot

P06345

Immunogen

Recombinant fusion protein containing a sequence corresponding to amino acids 30-219 of mouse H2-Ab1 (NP_996988.2).

Synonyms

IAb; Ia2; Ia-2; Abeta; H-2Ab; H2-Ab; Rmcs1; I-Abeta

Contact

☎ | 400-999-6126

✉ | cn.market@abclonal.com.cn

🌐 | www.abclonal.com.cn

Product Information

Source

Rabbit

Isotype

IgG

Purification

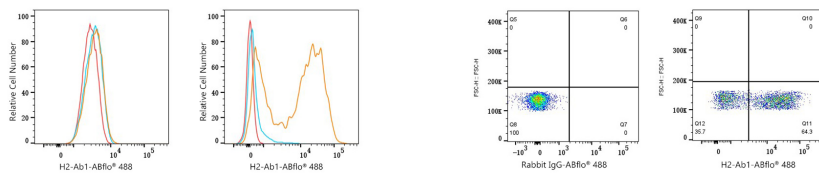
Affinity purification

Storage

Store at 2-8°C. Avoid freeze.

Buffer: PBS with 0.09% Sodium azide, 0.2% BSA, pH7.3.

Validation Data



Flow cytometry: 1×10^6 NIH/3T3 cells (negative control, left) and C57BL/6 mouse splenocytes (right) were surface-stained with ABflo® 488 Rabbit anti-Mouse H2-Ab1 mAb (A27182, 5 μ l/Test, orange line) or ABflo® 488 Rabbit IgG isotype control (A22069, 5 μ l/Test, blue line). Non-fluorescently stained cells were used as blank control (red line).

Flow cytometry: 1×10^6 C57BL/6 mouse splenocytes were surface-stained with ABflo® 488 Rabbit IgG isotype control (A22069, 5 μ l/Test, left) or ABflo® 488 Rabbit anti-Mouse H2-Ab1 mAb (A27182, 5 μ l/Test, right).