

ABflo® 488 Rabbit anti-Mouse IL22 mAb

Catalog No.: A27210

Basic Information

Observed MW

Calculated MW

20kDa

Category

Primary antibody

Applications

FC (intra)

Cross-Reactivity

Mouse

CloneNo number

ARC71491-ABflo488

Conjugate

ABflo® 488. Ex:491nm. Em:516nm.

Recommended Dilutions

FC (intra) 5 µl per 10⁶ cells in
100 µl volume

Background

Enables cytokine activity. Involved in negative regulation of inflammatory response. Acts upstream of or within positive regulation of transcription by RNA polymerase II; reactive oxygen species metabolic process; and regulation of tyrosine phosphorylation of STAT protein. Is active in extracellular space. Is expressed in ileum; retina; and skin. Used to study liposarcoma. Human ortholog(s) of this gene implicated in asthma. Orthologous to human IL22 (interleukin 22).

Immunogen Information

Gene ID

50929

Swiss Prot

Q9JJY9

Immunogen

Recombinant fusion protein containing a sequence corresponding to amino acids 34-179 of mouse IL22 (NP_058667.1).

Synonyms

IL-22; If2b1; Iltif; IL-22a; ILTIFa

Contact

☎ | 400-999-6126

✉ | cn.market@abclonal.com.cn

🌐 | www.abclonal.com.cn

Product Information

Source

Rabbit

Isotype

IgG

Purification

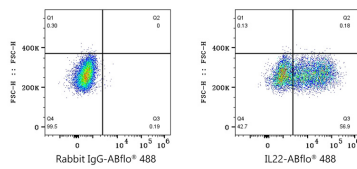
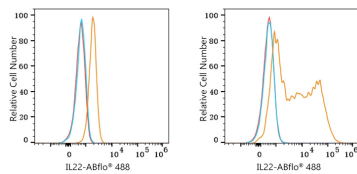
Affinity purification

Storage

Store at 2-8°C. Avoid freeze.

Buffer: PBS with 0.09% Sodium azide, 0.2% BSA, pH7.3.

Validation Data



Flow cytometry: 1×10^6 293T cells (negative control, left) and 293T (Transfection, right) cells were intracellularly-stained with ABflo® 488 Rabbit anti-Mouse IL22 mAb (A27210, 5 μ l/Test, orange line) or ABflo® 488 Rabbit IgG isotype control (A22069, 5 μ l/Test, blue line). Non-fluorescently stained cells were used as blank control (red line).

Flow cytometry: 1×10^6 293T (Transfection) cells were intracellularly-stained with ABflo® 488 Rabbit IgG isotype control (A22069, 5 μ l/Test, left) or ABflo® 488 Rabbit anti-Mouse IL22 mAb (A27210, 5 μ l/Test, right).