

ABflo® 647 Rabbit anti-Mouse IL22 mAb

Catalog No.: A27211

Basic Information

Observed MW

Calculated MW

20kDa

Category

Primary antibody

Applications

FC (intra)

Cross-Reactivity

Mouse

CloneNo number

ARC71491

Conjugate

ABflo® 647. Ex:648nm. Em:664nm.

Background

Enables cytokine activity. Involved in negative regulation of inflammatory response. Acts upstream of or within positive regulation of transcription by RNA polymerase II; reactive oxygen species metabolic process; and regulation of tyrosine phosphorylation of STAT protein. Is active in extracellular space. Is expressed in ileum; retina; and skin. Used to study liposarcoma. Human ortholog(s) of this gene implicated in asthma. Orthologous to human IL22 (interleukin 22).

Recommended Dilutions

FC (intra) 5 µl per 10⁶ cells in
100 µl volume

Immunogen Information

Gene ID

50929

Swiss Prot

Q9JJY9

Immunogen

Recombinant protein (or fragment). This information is considered to be commercially sensitive.

Synonyms

IL-22; If2b1; Iltif; IL-22a; ILTIFa

Contact

 | 400-999-6126

 | cn.market@abclonal.com.cn

 | www.abclonal.com.cn

Product Information

Source

Rabbit

Isotype

IgG

Purification

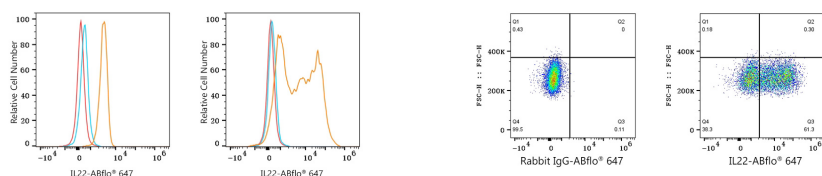
Affinity purification

Storage

Store at 2-8°C. Avoid freeze.

Buffer: PBS with 0.09% Sodium azide, 0.2% BSA, pH7.3.

Validation Data



Flow cytometry: 1×10^6 293T cells (negative control, left) and 293T (Transfection, right) cells were intracellularly-stained with ABflo® 647 Rabbit anti-Mouse IL22 mAb (A27211, 5 μ l/Test, orange line) or ABflo® 647 Rabbit IgG isotype control (A22070, 5 μ l/Test, blue line). Non-fluorescently stained cells were used as blank control (red line).

Flow cytometry: 1×10^6 293T (Transfection) cells were intracellularly-stained with ABflo® 647 Rabbit IgG isotype control (A22070, 5 μ l/Test, left) or ABflo® 647 Rabbit anti-Mouse IL22 mAb (A27211, 5 μ l/Test, right).