

ABflo® 647 Rabbit anti-Human CD18 mAb

Catalog No.: A27216

Basic Information

Observed MW

Calculated MW

85kDa

Category

Primary antibody

Applications

FC

Cross-Reactivity

Human

CloneNo number

ARC72097-ABflo647

Conjugate

ABflo® 647. Ex:648nm. Em:664nm.

Recommended Dilutions

FC 5 µl per 10⁶ cells in
100 µl volume

Background

This gene encodes an integrin beta chain, which combines with multiple different alpha chains to form different integrin heterodimers. Integrins are integral cell-surface proteins that participate in cell adhesion as well as cell-surface mediated signalling. The encoded protein plays an important role in immune response and defects in this gene cause leukocyte adhesion deficiency. Alternative splicing results in multiple transcript variants.

Immunogen Information

Gene ID

3689

Swiss Prot

P05107

Immunogen

Recombinant fusion protein containing a sequence corresponding to amino acids 1-769 of human CD18 (NP_000202.3).

Synonyms

LAD; CD18; MF17; MFI7; LCAMB; LFA-1; MAC-1

Contact

 | 400-999-6126

 | cn.market@abclonal.com.cn

 | www.abclonal.com.cn

Product Information

Source

Rabbit

Isotype

IgG

Purification

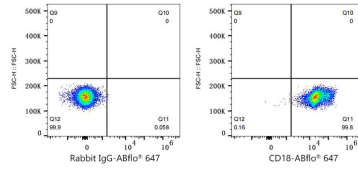
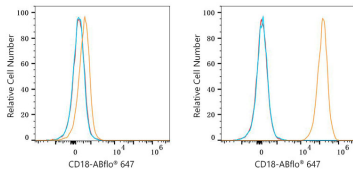
Affinity purification

Storage

Store at 2-8°C. Avoid freeze.

Buffer: PBS with 0.09% Sodium azide,0.2% BSA,pH7.3.

Validation Data



Flow cytometry: 1×10^6 HeLa cells (negative control, left) and THP-1 cells (right) were surface-stained with ABflo® 647 Rabbit anti-Human CD18 mAb (A27216, 5 μ l/Test, orange line) or ABflo® 647 Rabbit IgG isotype control (A22070, 5 μ l/Test, blue line). Non-fluorescently stained cells were used as blank control (red line).

Flow cytometry: 1×10^6 Human PBMC were surface-stained with ABflo® 647 Rabbit IgG isotype control (A22070, 5 μ l/Test, left) or ABflo® 647 Rabbit anti-Human CD18 mAb (A27216, 5 μ l/Test, right).