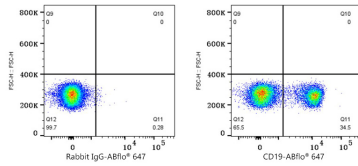




## Validation Data

---



Flow cytometry:  $1 \times 10^6$  Dog PBMC were surface-stained with ABflo® 647 Rabbit IgG isotype control (A22070, 5  $\mu$ l/Test, left) or ABflo® 647 Rabbit anti-Dog CD19 mAb (A27218, 5  $\mu$ l/Test, right). Cells in the lymphocyte gate were used for analysis.