

ELN Rabbit pAb

Catalog No.: A2723 **8 Publications**

Basic Information

Observed MW

70 kDa

Calculated MW

68 kDa

Category

Primary antibody

Applications

WB,IF-P,IHC-P,ELISA

Cross-Reactivity

Human, Mouse, Rat

Background

This gene encodes a protein that is one of the two components of elastic fibers. Elastic fibers comprise part of the extracellular matrix and confer elasticity to organs and tissues including the heart, skin, lungs, ligaments, and blood vessels. The encoded protein is rich in hydrophobic amino acids such as glycine and proline, which form mobile hydrophobic regions bounded by crosslinks between lysine residues. Degradation products of the encoded protein, known as elastin-derived peptides or elastokines, bind the elastin receptor complex and other receptors and stimulate migration and proliferation of monocytes and skin fibroblasts. Elastokines can also contribute to cancer progression. Deletions and mutations in this gene are associated with supravalvular aortic stenosis (SVAS) and autosomal dominant cutis laxa.

Recommended Dilutions

WB 1:500 - 1:5000

IF-P 1:50 - 1:200

IHC-P 1:1000 - 1:5000

ELISA Recommended starting concentration is 1 µg/mL. Please optimize the concentration based on your specific assay requirements.

Immunogen Information

Gene ID

2006

Swiss Prot

P15502

Immunogen

Recombinant protein (or fragment). This information is considered to be commercially sensitive.

Synonyms

WS; WBS; SVAS; ADCL1; ELN

Contact

☎ | 400-999-6126

✉ | cn.market@abclonal.com.cn

🌐 | www.abclonal.com.cn

Product Information

Source

Rabbit

Isotype

IgG

Purification

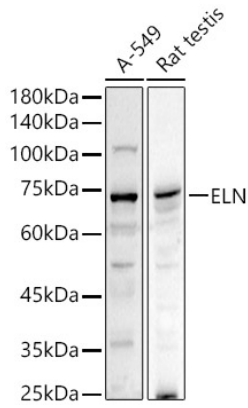
Affinity purification

Storage

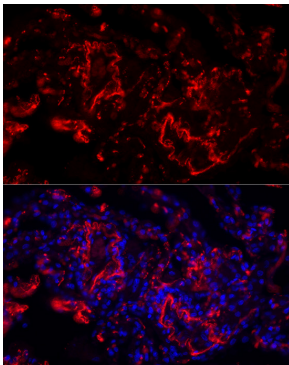
Store at -20°C. Avoid freeze / thaw cycles.

Buffer: PBS with 0.09% sodium azide, 50% glycerol, pH7.3.

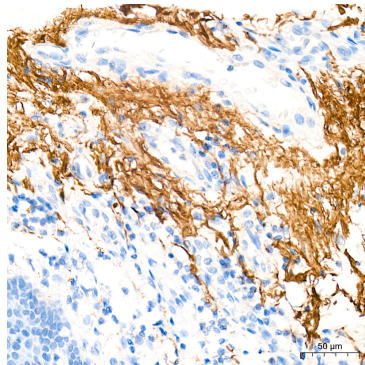
Validation Data



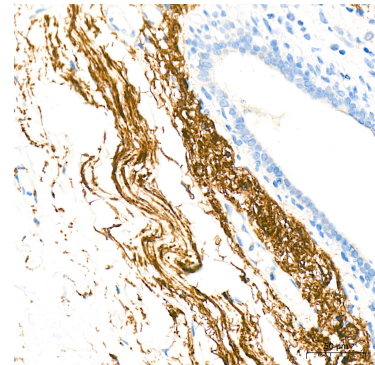
Western blot analysis of various lysates using ELN Rabbit pAb (A2723) at 1:1000 dilution. Secondary antibody: HRP-conjugated Goat anti-Rabbit IgG (H+L) (AS014) at 1:10000 dilution. Lysates/proteins: 25 μ g per lane. Blocking buffer: 3% nonfat dry milk in TBST. Detection: ECL Basic Kit (RM00020). Exposure time: 90s.



Immunofluorescence analysis of paraffin-embedded human lung using ELN Rabbit pAb (A2723) at dilution of 1:200 (40x lens). Secondary antibody: Cy3-conjugated Goat anti-Rabbit IgG (H+L) (AS007) at 1:500 dilution. Blue: DAPI for nuclear staining.



Immunohistochemistry analysis of paraffin-embedded Human esophagus tissue using ELN Rabbit pAb (A2723) at a dilution of 1:2000 (40x lens). High pressure antigen retrieval was performed with 0.01 M citrate buffer (pH 6.0) prior to IHC staining.



Immunohistochemistry analysis of paraffin-embedded Human breast tissue using ELN Rabbit pAb (A2723) at a dilution of 1:2000 (40x lens). High pressure antigen retrieval was performed with 0.01 M citrate buffer (pH 6.0) prior to IHC staining.