

ACP5 Rabbit mAb

Catalog No.: A27245 **Recombinant**

Basic Information

Observed MW

37kDa

Calculated MW

37kDa

Category

Primary antibody

Applications

WB,IF-P,IHC-P,ELISA

Cross-Reactivity

Human

CloneNo number

ARC3414

Background

This gene encodes an iron containing glycoprotein which catalyzes the conversion of orthophosphoric monoester to alcohol and orthophosphate. It is the most basic of the acid phosphatases and is the only form not inhibited by L(+)-tartrate.

Recommended Dilutions

WB 1:1000 - 1:2000

IF-P 1:50 - 1:200

IHC-P 1:1000 - 1:3000

ELISA Recommended starting concentration is 1 µg/mL. Please optimize the concentration based on your specific assay requirements.

Immunogen Information

Gene ID

54

Swiss Prot

P13686

Immunogen

Recombinant protein (or fragment). This information is considered to be commercially sensitive.

Synonyms

HPAP; TRAP; TRAcP; TRACP5a; TRACP5b; TrATPase

Contact

☎ | 400-999-6126

✉ | cn.market@abclonal.com.cn

🌐 | www.abclonal.com.cn

Product Information

Source

Rabbit

Isotype

IgG

Purification

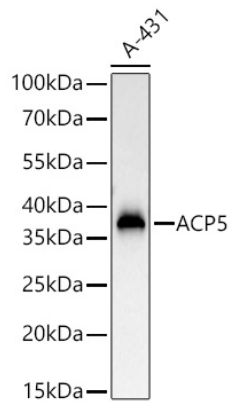
Affinity purification

Storage

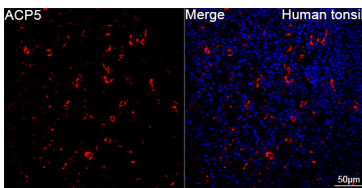
Store at -20°C. Avoid freeze / thaw cycles.

Buffer: PBS with 0.01% Sodium azide, 0.05% BSA, 40% glycerol, pH7.2.

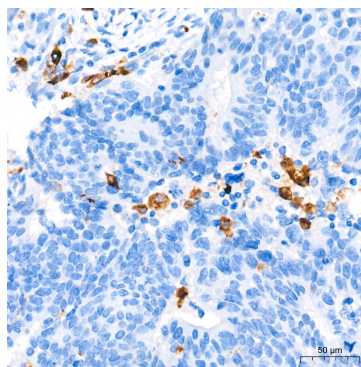
Validation Data



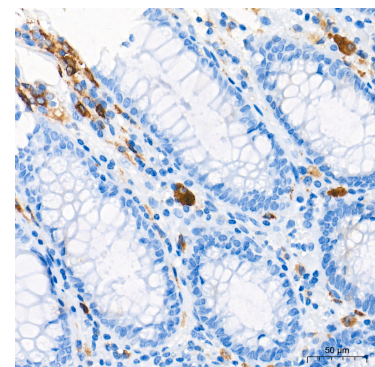
Western blot analysis of lysates from A-431 cells using ACP5 Rabbit mAb (A27245) at 1:1000 dilution incubated at room temperature for 1.5 hours.
Secondary antibody: HRP-conjugated Goat anti-Rabbit IgG (H+L) (AS014) at 1:10000 dilution.
Lysates/proteins: 25 µg per lane.
Blocking buffer: 3% nonfat dry milk in TBST.
Detection: ECL Basic Kit (RM00020).
Exposure time: 60s.



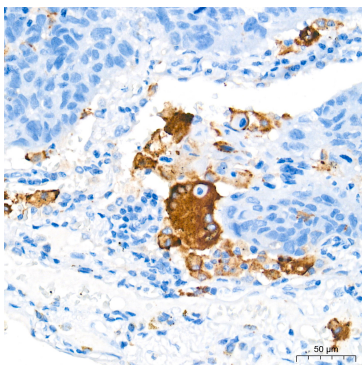
Confocal imaging of paraffin-embedded Human tonsil tissue using ACP5 Rabbit mAb (A27245, dilution 1:100) followed by a further incubation with Cy3 Goat Anti-Rabbit IgG (H+L) (AS007, dilution 1:500) (Red). DAPI was used for nuclear staining (Blue). High pressure antigen retrieval performed with 0.01M Citrate Buffer (pH 6.0) prior to IF staining. Objective: 40x.



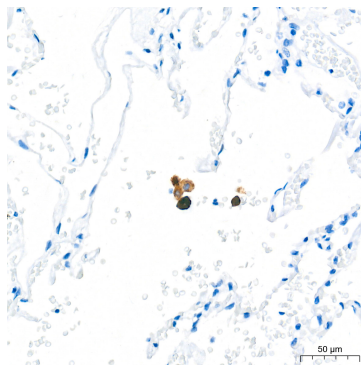
Immunohistochemistry analysis of paraffin-embedded Human colon carcinoma tissue using ACP5 Rabbit mAb (A27245) at a dilution of 1:1000 (40x lens). High pressure antigen retrieval performed with 0.01M Tris-EDTA Buffer (pH 9.0) prior to IHC staining.



Immunohistochemistry analysis of paraffin-embedded Human colon tissue using ACP5 Rabbit mAb (A27245) at a dilution of 1:1000 (40x lens). High pressure antigen retrieval performed with 0.01M Tris-EDTA Buffer (pH 9.0) prior to IHC staining.



Immunohistochemistry analysis of paraffin-embedded Human lung cancer tissue using ACP5 Rabbit mAb (A27245) at a dilution of 1:1000 (40x lens). High pressure antigen retrieval performed with 0.01M Tris-EDTA Buffer (pH 9.0) prior to IHC staining.



Immunohistochemistry analysis of paraffin-embedded Human lung tissue using ACP5 Rabbit mAb (A27245) at a dilution of 1:1000 (40x lens). High pressure antigen retrieval performed with 0.01M Tris-EDTA Buffer (pH 9.0) prior to IHC staining.