

FOXP3 Rabbit mAb

Catalog No.: A27249 **Recombinant**

Basic Information

Observed MW

55 kDa(N-terminal protein)

Calculated MW

47 kDa

Category

Primary antibody

Applications

WB,IHC-P,ELISA

Cross-Reactivity

Mouse, Rat

CloneNo number

ARC3418

Background

The protein encoded by this gene is a member of the forkhead/winged-helix family of transcriptional regulators. Defects in this gene are the cause of immunodeficiency polyendocrinopathy, enteropathy, X-linked syndrome (IPEX), also known as X-linked autoimmunity-immunodeficiency syndrome. Alternatively spliced transcript variants encoding different isoforms have been identified.

Recommended Dilutions

WB 1:20000 - 1:120000

IHC-P 1:200 - 1:800

ELISA Recommended starting concentration is 1 µg/mL. Please optimize the concentration based on your specific assay requirements.

Immunogen Information

Gene ID

50943

Swiss Prot

Q9BZS1

Immunogen

Recombinant protein (or fragment).This information is considered to be commercially sensitive.

Synonyms

JM2; AIID; IPEX; PIDX; XPID; DIETER

Contact

☎ | 400-999-6126

✉ | cn.market@abclonal.com.cn

🌐 | www.abclonal.com.cn

Product Information

Source

Rabbit

Isotype

IgG

Purification

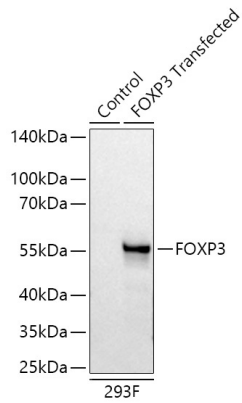
Affinity purification

Storage

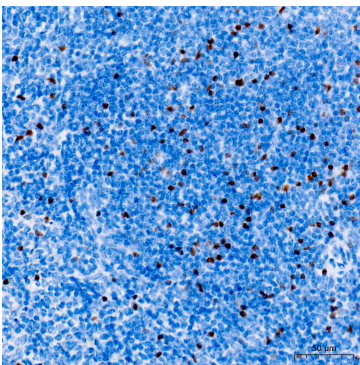
Store at -20°C. Avoid freeze / thaw cycles.

Buffer: PBS with 0.01% Sodium azide,0.05% BSA,40% glycerol,pH7.2.

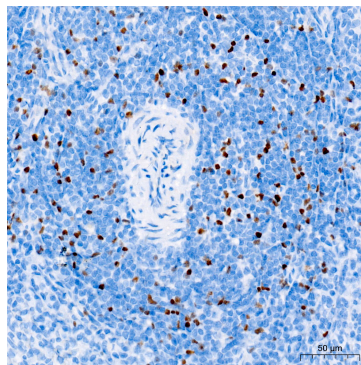
Validation Data



Western blot analysis of lysates from wild type (WT) and 293T cells transfected with FOXP3 using FOXP3 Rabbit mAb (A27249) at 1:20000 dilution incubated overnight at 4°C.
Secondary antibody: HRP-conjugated Goat anti-Rabbit IgG (H+L) (AS014) at 1:10000 dilution.
Lysates/proteins: 25 µg per lane.
Blocking buffer: 3% nonfat dry milk in TBST.
Detection: ECL Basic Kit (RM00020)
Exposure time: 10s.



Immunohistochemistry analysis of paraffin-embedded Mouse spleen tissue using FOXP3 Rabbit mAb (A27249) at a dilution of 1:200 (40x lens). High pressure antigen retrieval performed with 0.01M Tris-EDTA Buffer (pH 9.0) prior to IHC staining.



Immunohistochemistry analysis of paraffin-embedded Rat spleen tissue using FOXP3 Rabbit mAb (A27249) at a dilution of 1:200 (40x lens). High pressure antigen retrieval performed with 0.01M Tris-EDTA Buffer (pH 9.0) prior to IHC staining.